

# 84 LUMBER HOME PACKAGES



**NEW HOMES!**

Ten new models  
debut in this issue.

Dozens of charming home  
packages from 448 – 3,440 sq.ft.

**1-800-359-8484**

**84LUMBER.COM**

# ABOUT 84 HOMES



Thanks for considering 84 Lumber for your new home purchase. We've been supplying home building materials since 1956, and we're ready to help with yours. To help you with budgeting your 84 Lumber associate has instant package pricing available on all of these homes, and can quickly provide you with a written materials estimate. Of course you can tailor your materials package as needed to suit your tastes and budget.

*84 Lumber will support you throughout your home building process with the commitment of our highly trained and motivated associates. From the store associate who prepares your estimate to the yard person who prepares your deliveries, rest assured that we focus on the needs of you and your builder. We prove this commitment every day:*

- Personalized service
- Free estimating
- Accurate blueprint takeoffs
- Job-site visits
- Detailed invoicing
- Professional guaranteed delivery
- Technical support
- Special order service
- Quick resolution of problems

This catalog combines two great home programs into one convenient guide:

## THE AFFORDABLE COLLECTION

The Affordable Home Collection includes designs that can be built for a low cost for both material and labor, while not sacrificing quality or compromising the floor plans. Each home is available with two basic versions:



**THE VALUE PLAN** offers the lowest cost version of your selected home package. It gives you the design you want at a price you can afford, while keeping you in control of your materials choices. No sub-standard products here. You can count on consistent high-quality lumber and building products throughout.



**THE ENHANCED PLAN** adds your favorite amenities to suit your preferences. Choose any one option or choose them all. This allows you to create the perfect home for your situation. The enhancements (shown on the floor plans in yellow) vary by model but typically will include:

- Garage
- Front porch
- Fireplace
- Deck
- Angle bay windows
- Box bay windows
- Dormers
- Family room

## THE OAKS COLLECTION



The Oaks Collection Homes are specifically selected due to their elaborate architectural styling and well-designed floor plans. These gems put custom designs at your fingertips while keeping the convenience of package pricing. You'll find fancy rooflines and accoutrements worthy of the finest neighborhoods.

## ON THE COVER

Savannah (Pg. 4), Pine Flat (Pg. 6), Rutland (Pg. 14), Hillcrest (Pg. 21)

# TABLE OF CONTENTS

## TINY LIVING & VACATION

HOUSE	AREA	B.R.	BATHS	PAGE
Salmon Creek	448 sq.ft.	1	1	4
Hearts Content	448 sq.ft.	1	1	4
Ross Run	540 sq.ft.	2	1	5
Elkview	576 sq.ft.	2	1	5
Hemlock Hideaway	728 sq.ft.	2	1	6 <b>New!</b>
Pine Flat	1,090 sq.ft.	2	1	6 <b>New!</b>
Watertown	1,241 sq.ft.	3	2	7
Pocomoke City	1,245 sq.ft.	3	1 1/2	7
Lakewood	1,412 sq.ft.	3	1 1/2	7

## SPLIT & BI-LEVEL

HOUSE	AREA	B.R.	BATHS	PAGE
Wexford	1,027 sq.ft.	3	2	8
Newbury	1,632 sq.ft.	4	2 1/2	8
Huntington	2,387 sq.ft.	3	2 1/2	9

## TOWNHOMES

HOUSE	AREA	B.R.	BATHS	PAGE
16' Townhouse	1,056 sq.ft.	2	1 1/2	10
20' Townhouse	1,444 sq.ft.	3	2 1/2	11

## RANCH

HOUSE	AREA	B.R.	BATHS	PAGE
Westhaven	982 sq.ft.	3	1	12
St. Albans	1,120 sq.ft.	3	2	12
Berkshire Court	1,257 sq.ft.	3	2	13 <b>New!</b>
Bluff City	1,288 sq.ft.	3	2	13
Rutland	1,312 sq.ft.	3	2	14 <b>New!</b>
Pinehurst	1,400 sq.ft.	3	2	14
Lexington	1,405 sq.ft.	3	2	15
Hickory	1,456 sq.ft.	3	2	15
Oxford	1,456 sq.ft.	3	2	16
Savannah	1,492 sq.ft.	3	2	16
Loyalhanna	1,518 sq.ft.	3	2	17
Wellsburg	1,533 sq.ft.	3	2	17
Richfield	1,539 sq.ft.	3	2	18 <b>New!</b>
Glenbrook	1,568 sq.ft.	3	2	18 <b>New!</b>
Cottagewood	1,575 sq.ft.	3	2	19
Albany	1,583 sq.ft.	3	2	19
Winchester	1,620 sq.ft.	4	2	20
Kingsley	1,631 sq.ft.	3	2	20 <b>New!</b>
Hillcrest	1,636 sq.ft.	3	2	21 <b>New!</b>
Clarissa	1,686 sq.ft.	3	2	21
Hartwood	1,738 sq.ft.	3	2	22
Havenwood	1,831 sq.ft.	3	2 1/2	22
Warwick	1,831 sq.ft.	3	2	23 <b>New!</b>
Covington	1,831 sq.ft.	3	2	23 <b>New!</b>
Northport	1,858 sq.ft.	3	2	24

## 1 1/2 STORY

HOUSE	AREA	B.R.	BATHS	PAGE
Forest Glen	1,428 sq.ft.	3	2	25
Auburn	1,784 sq.ft.	3	2 1/2	26
Highland	1,894 sq.ft.	3	2 1/2	26
Farmington	1,907 sq.ft.	3	2 1/2	27
Cape May	1,915 sq.ft.	4	3	28
Livingstone	2,016 sq.ft.	4	3	29
Fremont	2,176 sq.ft.	3	2 1/2	29
Carriage Hill	2,372 sq.ft.	3	2 1/2	30
Andover	2,483 sq.ft.	3	2 1/2	30
Alexandria	3,440 sq.ft.	4	3 1/2	31

## 2 STORY

HOUSE	AREA	B.R.	BATHS	PAGE
Mt. Airy	1,344 sq.ft.	3	2 1/2	32
Angela	1,763 sq.ft.	3	2 1/2	33
Bridgeville	1,900 sq.ft.	3	2 1/2	34
Archmont	1,930 sq.ft.	3	2 1/2	35
Sunnyvale	1,960 sq.ft.	4	2 1/2	36
Dunkirk	1,992 sq.ft.	4	2 1/2	37
Adrian	2,016 sq.ft.	4	2 1/2	38
Washington	2,033 sq.ft.	3	2 1/2	39
Manhattan	2,083 sq.ft.	3	2 1/2	40
Louisville	2,094 sq.ft.	4	2 1/2	41
Ashton	2,143 sq.ft.	4	2 1/2	42
Heritage	2,157 sq.ft.	3	2 1/2	43
Hampton	2,242 sq.ft.	3	2 1/2	44
Country Manor	2,281 sq.ft.	3	2 1/2	45
Stratford	2,293 sq.ft.	4	2 1/2	46
Bayside	2,525 sq.ft.	3	2 1/2	47
Woodlands	2,545 sq.ft.	4	3 1/2	48
Westminster	2,576 sq.ft.	4	2 1/2	49
Hightower	2,674 sq.ft.	3	2 1/2	50
Bradford	2,710 sq.ft.	4	2 1/2	50

Blueprint information 51

### What's included?

When you've settled on your perfect home package it's time to see your 84 Lumber associate for a written materials estimate for your dream home. Products and brands vary widely so you'll want to discuss specifics. See the back cover for more details.

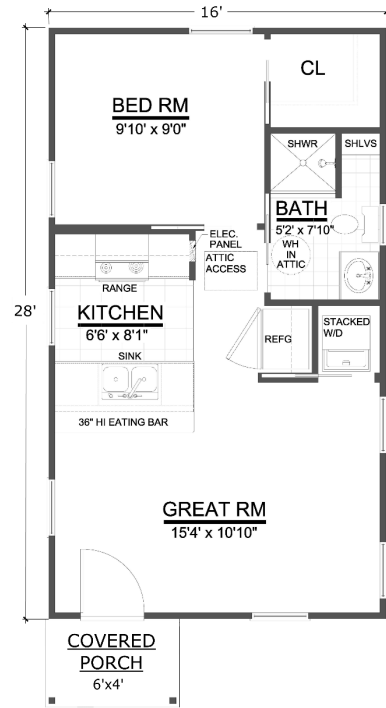
# TINY LIVING & VACATION

## SALMON CREEK 448 SQ. FT. *Tiny Living*



### SPECIFICATIONS

Living area:	448 sq.ft.	Roof framing:	Rafters
Bedrooms:	1	Porch area:	25 sq.ft.
Baths:	1	Main ceiling height:	8'
House width:	16'	Foundation:	Crawl, Slab
House depth:	28'	Exterior walls:	2x4
Primary roof pitch:	6/12		



- Large windows in the great room really open up your space.
- The galley kitchen offers plenty of space and features a walk-up bar for dining.

## HEARTS CONTENT 448 SQ. FT. *Tiny Living*



### SPECIFICATIONS

Living area:	448 sq.ft.	Roof framing:	Rafters
Bedrooms:	1	Porch area:	168 sq.ft.
Baths:	1	Main ceiling height:	8'
House width:	16'	Foundation:	Crawl, Slab
House depth:	28'	Exterior walls:	2x4
Primary roof pitch:	6/12		



- Massive front porch perfect for quiet evenings and family gatherings.
- Full-sized closet flanks the bedroom providing plenty of storage keeping your life uncluttered.
- Enjoy the full-sized shower in the full bath.

# TINY LIVING & VACATION



Tiny Living

## ROSS RUN 540 SQ. FT.



### SPECIFICATIONS

- Spend your evenings relaxing in front of the fireplace in the large Great Room.
- Covered porch provides ample space for lounging and enjoying the view to your own piece of paradise.
- Second bedroom accommodates kids, guests, or could even double as a craft room or home office.

Living area:	540 sq.ft.	Roof framing:	Rafters
Bedrooms:	2	Porch area:	118 sq.ft.
Baths:	1	Main ceiling height:	8'
House width:	22'-6"	Foundation:	Crawl, Slab
House depth:	30'	Exterior walls:	2x4
Primary roof pitch:	6/12		



Affordable Collection

## ELKVIEW 576 SQ.FT



Elkview Enhanced Plan

### ENHANCEMENTS

### SPECIFICATIONS

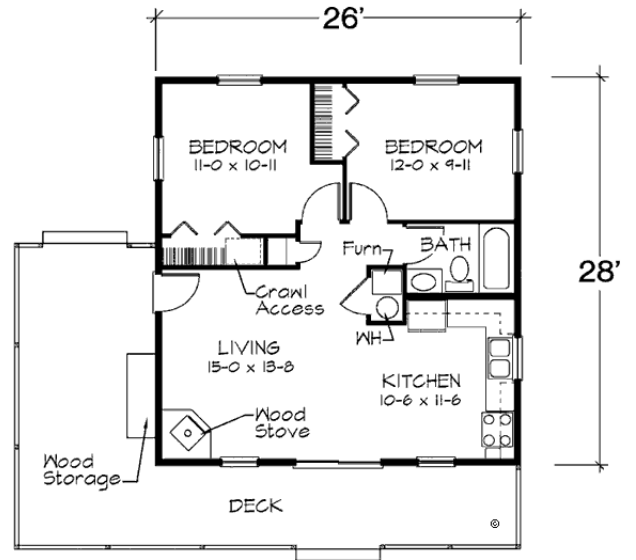
- One car garage (12'x24')
- Front porch (10'x4')
- Rear deck (10'x8')
- Corner fireplace
- Patio door

Living area:	576 sq.ft.	Garage area:	288 sq.ft.
Bedrooms:	2	Porch area:	40 sq.ft.
Baths:	1	Deck area:	80 sq.ft.
House width:	24'	Main ceiling height:	8'
House depth:	24'	Foundation:	C, S
Primary roof pitch:	4/12	Walls:	2x4, 2x6

Photos or renderings will vary from actual plan.

# TINY LIVING & VACATION

## HEMLOCK HIDEAWAY 728 SQ. FT. Oaks Collection

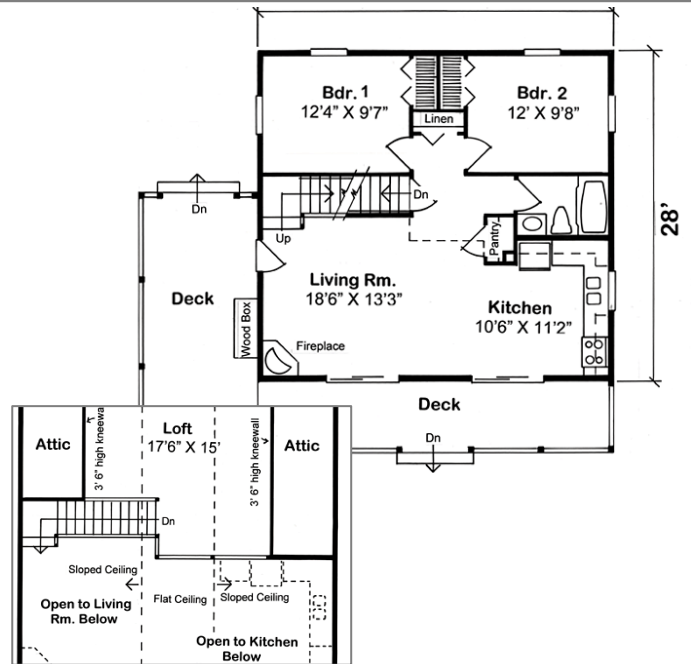


### SPECIFICATIONS

Living area:	728 sq.ft.	Roof framing:	Trusses
Bedrooms:	2	Porch area:	376 sq.ft.
Baths:	1	Main ceiling height:	8'
House width:	28'	Foundation:	Crawl, Slab
House depth:	26'	Exterior walls:	2x6
Primary roof pitch:	4/12	Fireplace:	Wood stove

- Take off for the weekend and relax on the included deck.
- Roaring fire in the wood stove will keep you warm and cozy.
- Convenient firewood storage bin on the deck.
- Large living room with double doors to bring in the fresh air.
- Kitchen contains space for an ample counter, cabinets, double sink, refrigerator, and oven/range.
- Full bath serves the two large bedrooms.

## PINE FLAT 1,090 SQ. FT. Oaks Collection



### SPECIFICATIONS

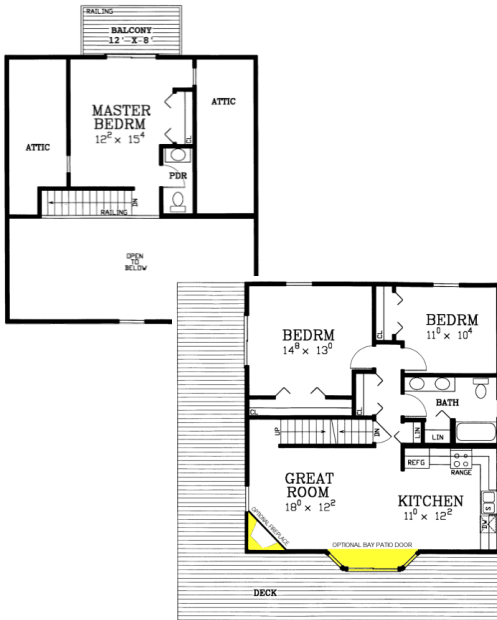
Living area:	1,090 sq.ft.	Roof framing:	Rafters
Bedrooms:	2	Deck/patio area:	400 sq.ft.
Baths:	1	Main ceiling height:	8'
House width:	30'	Foundation:	B, C, S
House depth:	28'	Exterior walls:	2x6
Primary roof pitch:	9/12	Fireplace:	Yes

- Large deck wraps around the cabin and is perfect for sitting and enjoying the scenery.
- Large living room has a sloped ceiling and is open to the loft.
- L-Shaped kitchen is fully appointed with everything that you would expect from your kitchen at home.
- Downstairs find two large bedrooms with closets.
- Full bath rounds out the main level.
- Spacious loft with a sloped ceiling.

# TINY LIVING & VACATION

Affordable Collection

## POCOMOKE CITY 1,245 SQ.FT.



### SPECIFICATIONS

Living area:	1,245 sq.ft.
First floor area:	960 sq.ft.
Upper level area:	285 sq.ft.
Bedrooms:	3
Baths:	1 1/2
House width:	30' (38' w/deck)
House depth:	32' (40' w/deck)
Roof pitch:	10/12
Deck area:	560 sq.ft.
Formal dining?	No
Great room?	Yes
Fireplace?	Optional
Main ceiling height:	8'
Foundation:	B, C, S
Walls:	2x4, 2x6



### ENHANCEMENTS

- Walk-through angle bay
- Fireplace

### STANDARD FEATURES

- Wrap-around deck
- Rear balcony



Affordable Collection

## WATERTOWN 1,241 SQ.FT.

### SPECIFICATIONS

Living area:	1,241 sq.ft.
Enhanced area:	1,241 sq.ft.
First floor area:	784 sq.ft.
Upper-level area:	457 sq.ft.
Bedrooms:	3
Baths:	2
House width:	28'
House depth:	28'
Primary roof pitch:	8/12
Garage area:	N/A
Front deck area:	200 sq.ft.
Rear deck area:	40 sq.ft.
Main ceiling height:	8'
Foundation:	B, C, S
Walls:	2x4, 2x6

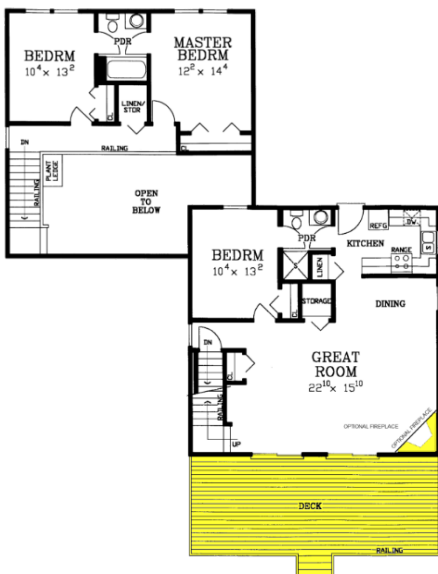


### ENHANCEMENTS

- Fireplace

### STANDARD FEATURES

- Front deck
- Rear balcony



Affordable Collection

## LAKWOOD 1,412 SQ.FT.

### SPECIFICATIONS

Living area:	1,412 sq.ft.
First floor area:	900 sq.ft.
Upper-level area:	512 sq.ft.
Bedrooms:	3
Baths:	1 1/2
House width:	30'
House depth:	30'
Primary roof pitch:	10/12
Garage area:	NA
Front deck area:	480 sq.ft.
Formal dining?	No
Great room?	Yes
Fireplace?	Optional
Main ceiling height:	8'
Foundation:	B, C, S
Walls:	2x4, 2x6



### ENHANCEMENTS

- Front deck w/ railing
- Sliding glass doors
- Fireplace

### STANDARD FEATURES

- Front deck
- Rear balcony

Photos or renderings will vary from actual plan.

# SPLIT & BI-LEVEL

## WEXFORD 1,027 – 1,381 SQ.FT. *Affordable Collection*



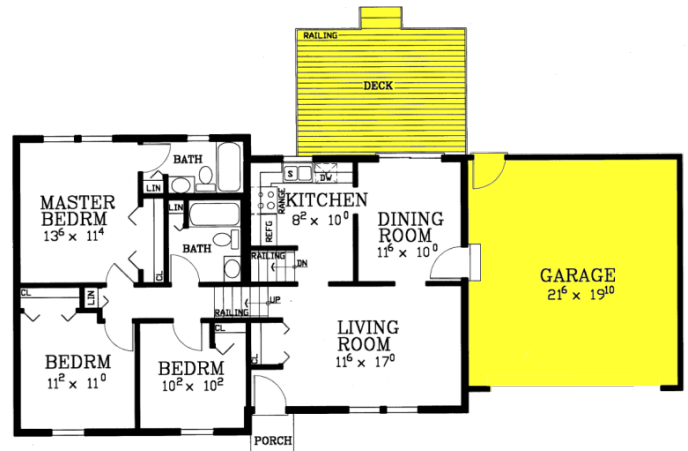
### ENHANCEMENTS

- Finished lower level
- Rear deck with railing (16'x12')
- Fireplace

### SPECIFICATIONS

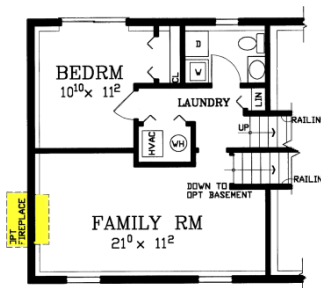
Living area:	1,027 sq.ft	Primary roof pitch:	6/12
Enhanced area:	1,381 sq.ft	Garage area:	483 sq.ft.
First floor area:	1,040 sq.ft.	Porch area:	24 sq.ft.
Lower level area:	354 sq.ft.	Deck area:	192 sq.ft.
Bedrooms:	3	Main ceiling height:	8'
Baths:	2	Foundation:	Standard
House width:	40'	Walls:	2x4, 2x6
House depth:	26'		

## NEWBURY 1,632 SQ.FT *Affordable Collection*



### ENHANCEMENTS

- Two car garage (20'x22')
- Rear deck with railing (16'x12')
- Fireplace



### SPECIFICATIONS

Living area:	1,632 sq.ft
Enhanced area:	1,632 sq.ft.
Bedrooms:	4
Baths:	2 1/2
House width:	42' 4"
House depth:	28'
Primary roof pitch:	6/12
Garage area:	440 sq.ft
Porch area:	24 sq.ft.
Deck area:	192 sq.ft.
Main ceiling height:	8'
Foundation:	B, C
Walls:	2x4, 2x6

# SPLIT & BI-LEVEL

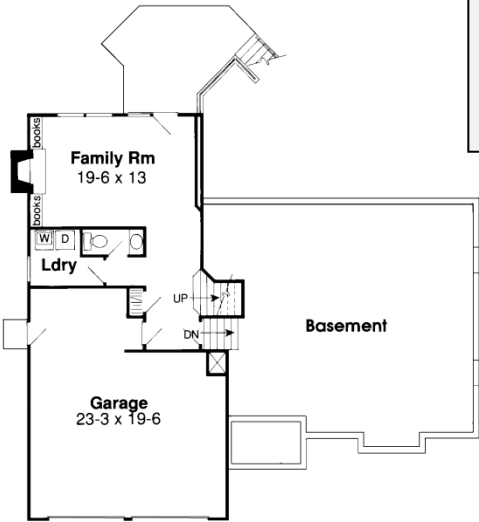
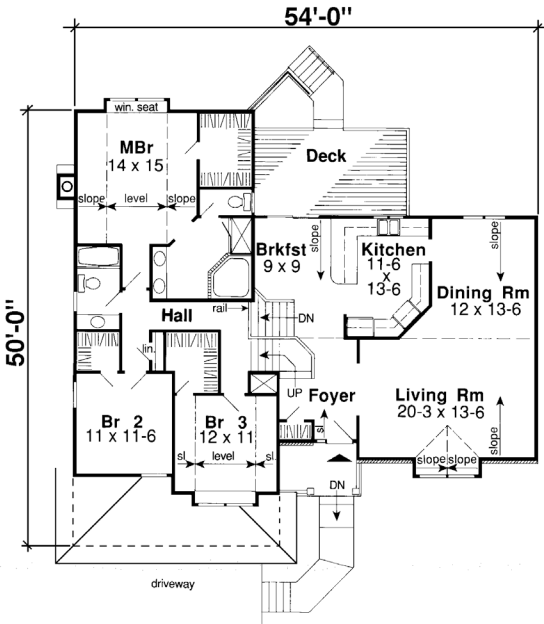
Oaks Collection **HUNTINGTON** 2,387 SQ.FT.



**ZONED FOR HARMONY**

A vaulted ceiling covers the entire living area, under which an efficient kitchen is separated from the breakfast room by a peninsula counter. To the right, the formal living and dining rooms flow into each other. A more informal living room sits on the walk-out lower level. All of the bedrooms have walk-in closets, while the master suite also features a window seat.

<i>Specifications</i>	
Total Living Area:	2,387 sq.ft.
Main Living Area:	1,861 sq.ft.
Lower Living Area:	526 sq.ft.
Garage area:	574 sq.ft.
Garage Bays:	2
House Width:	54'
House Depth:	50'
Bedrooms:	3
Baths:	2 1/2
Max Ridge Height:	26'
Primary Roof Pitch:	7/12
Porch:	54 sq.ft.
Deck:	181 sq.ft.
Fireplace:	Yes
2nd Floor Laundry:	Yes
Main Ceiling Height:	8'
Plan:	20209



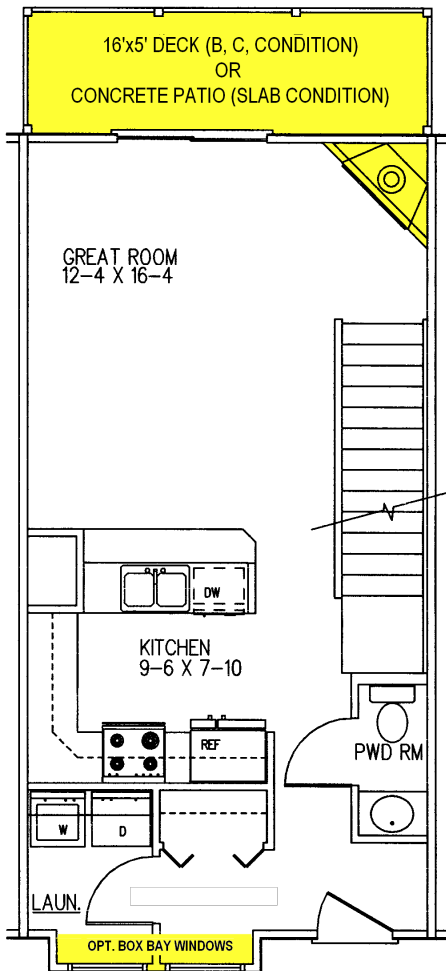
Photos or renderings will vary from actual plan.

# MULTI-FAMILY

**16' TOWNHOME** 1,056 SQ.FT. *Affordable Collection*



16' & 20' Townhomes

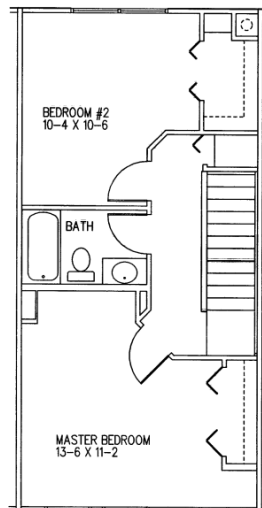


## SPECIFICATIONS

Living area:	1,056 sq.ft.
First floor area:	512 sq.ft.
Upper level area:	544 sq.ft.
Bedrooms:	2
Baths:	1 1/2
House width:	16'
House depth (1 <sup>st</sup> ):	32'
House depth (2 <sup>nd</sup> ):	34'
Primary roof pitch:	6/12
Garage area:	280 sq.ft.
Rear deck area:	80 sq.ft.
Main ceiling height:	8'
Foundation:	B, C, S
Walls:	2x4, 2x6

## ENHANCEMENTS

- Rear deck with railing (16'x5')
- Turned gables
- Box bay windows
- Fireplace
- Front or rear integral garage (option available with full basement only)



16' Townhome  
(Front garage)



16' Townhome  
(Rear garage)

Affordable Collection

## 20' TOWNHOME 1,444 SQ.FT.



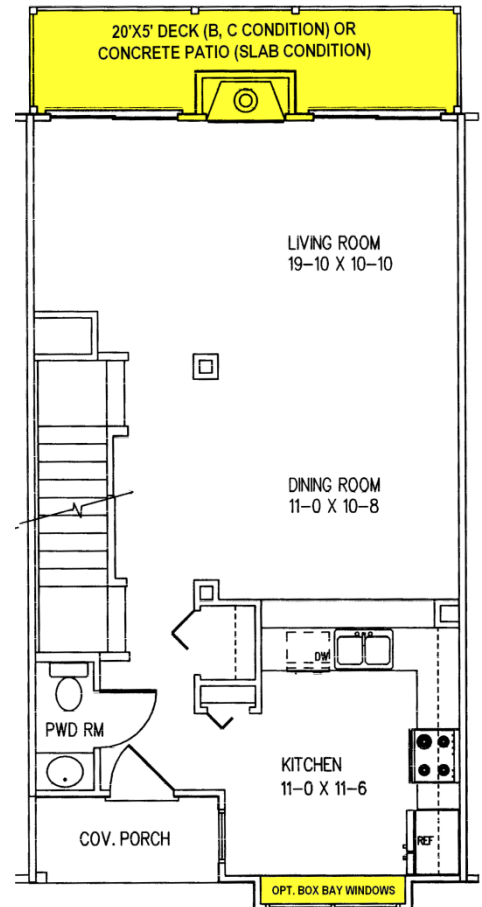
20' Townhomes, highly modified

### ENHANCEMENTS

- Rear deck with railing (20'x5')
- Turned gables
- Box bay windows
- Fireplace
- Front or rear integral garage (option available only with full basement)

### SPECIFICATIONS

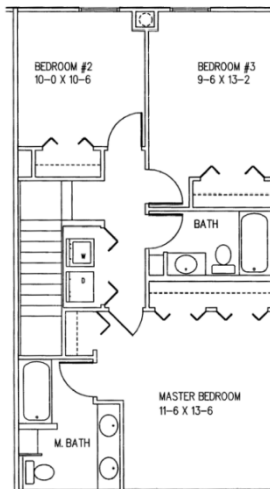
Living area:	1,444 sq. ft.
First floor area:	684 sq. ft.
Upper level area:	760 sq. ft.
Bedrooms:	3
Baths:	2 1/2
House width:	20'
House depth (1 <sup>st</sup> ):	36'
House depth (2 <sup>nd</sup> ):	38'
Primary roof pitch:	6/12
Garage area:	280 sq. ft.
Rear deck area:	100 sq. ft.
Main ceiling height:	8'
Foundation:	B, C, S
Walls:	2x4, 2x6



20' Townhome  
(Front garage)



20' Townhome  
(Rear view)



Photos or renderings will vary from actual plan.

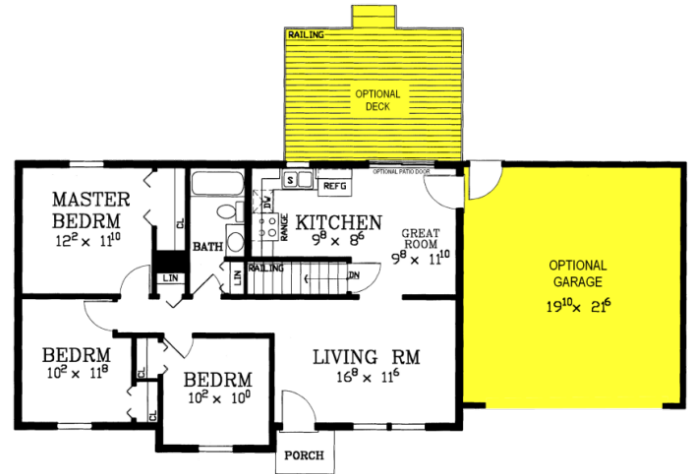
# RANCH

## WESTHAVEN 982 SQ. FT.

Affordable Collection



Westhaven Enhanced Plan



### SPECIFICATIONS

Living area:	982 sq.ft.	Garage area:	440 sq.ft.
Bedrooms:	3	Porch area:	40 sq.ft.
Baths:	1	Deck area:	192 sq.ft.
House width:	40'	Main ceiling height:	8'
House depth:	24'	Foundation:	B, C, S
Primary roof pitch:	6/12	Walls:	2x4, 2x6

### ENHANCEMENTS

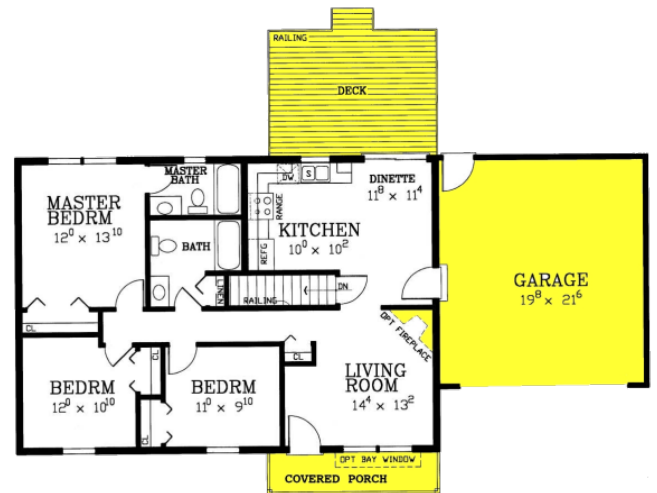
- Two car garage (20'x22')
- Rear deck with railing (16'x12')
- Patio door

## ST. ALBANS 1,120 - 1,132 SQ.FT.

Affordable Collection



St. Albans Value Plan with front porch



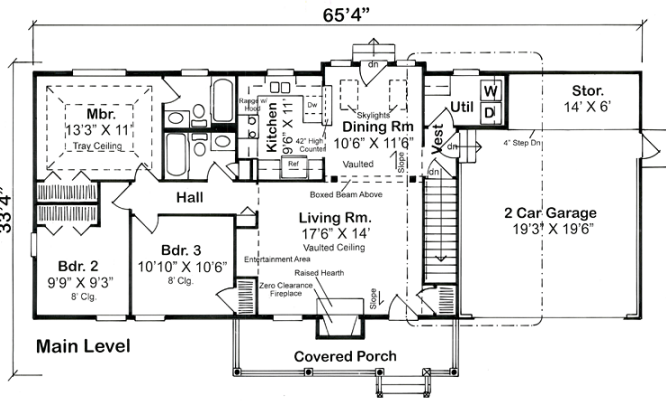
### SPECIFICATIONS

Living area:	1,120	Garage area:	440 sq.ft.
Enhanced area:	1,132 sq.ft.	Porch area:	72 or 20 sq.ft.
Bedrooms:	3	Deck area:	192 sq.ft.
Baths:	2	Main ceiling height:	8'
House width:	40'	Foundation:	B, C, S
House depth:	28'	Walls:	2x4, 2x6
Primary roof pitch:	6/12		

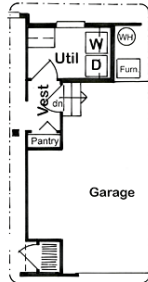
### ENHANCEMENTS

- Two car garage (20'x22')
- Front porch (18'x4' or 5'x4')
- Rear deck (16'x12')
- Box bay window
- Corner fireplace

## Oaks Collection **BERKSHIRE COURT** 1,257 SQ. FT.



The centrally located living room greets guests and opens to the skylit dining room beyond. Adjoining the dining room, the kitchen offers an efficient, space-saving layout and includes a serving bar that's ideal for a quick snack. The master is tucked behind the bathrooms making for a quiet retreat. A storage alcove in the garage leaves room for a functional workstation or space for motorsport toys.

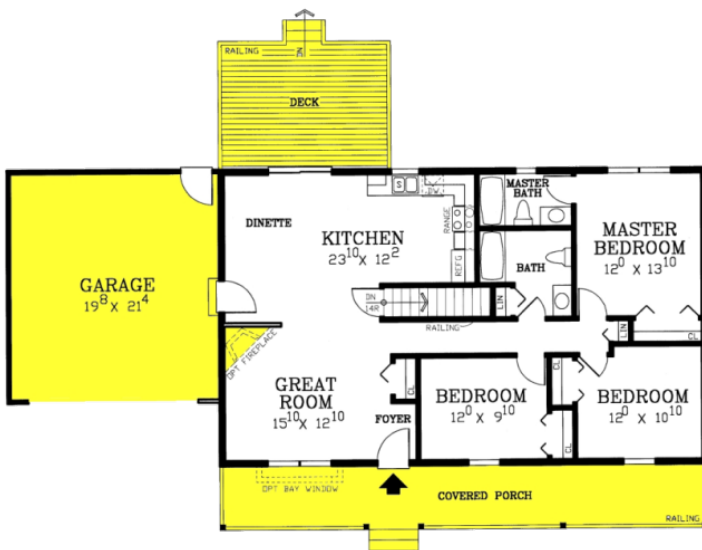
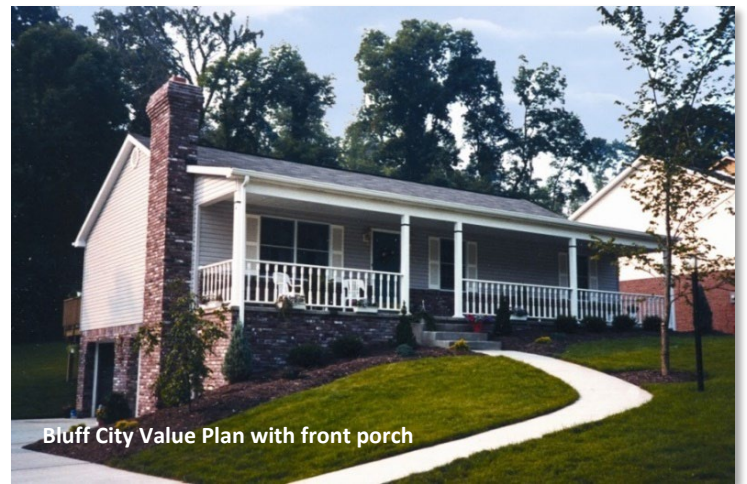


Floor Plan for Opt. Crawlspace or Slab Foundation

### SPECIFICATIONS

Main living area:	1,257 sq. ft.	Roof Framing:	Trusses
Bonus room area:	443 sq. ft.	Main ceiling height:	8'-9"
Garage area:	458 sq. ft.	Fireplace:	Yes
House width:	65'	First floor Master:	Yes
House depth:	35'	Formal dining room:	Yes
Bedrooms:	3	Foundation:	B, C, S
Baths:	2	Exterior walls:	2x6
Ridge height:	21'-6"	Plan #	24723
Primary roof pitch:	8/12		

## Affordable Collection **BLUFF CITY** 1,288 – 1,300 SQ. FT.



### ENHANCEMENTS

- Two car garage (20'x22')
- Front porch with railing (46'x6')
- Rear deck with railing (16'x12')
- Corner fireplace
- Box bay window

### SPECIFICATIONS

Living area:	1,288	Garage area:	440 sq.ft.
Enhanced area:	1,300 sq.ft.	Porch area:	276 sq.ft.
Bedrooms:	3	Deck area:	192 sq.ft.
Baths:	2	Main ceiling height:	8'
House width:	46'	Foundation:	B, C, S
House depth:	28'	Walls:	2x4, 2x6
Primary roof pitch:	6/12		

# RANCH

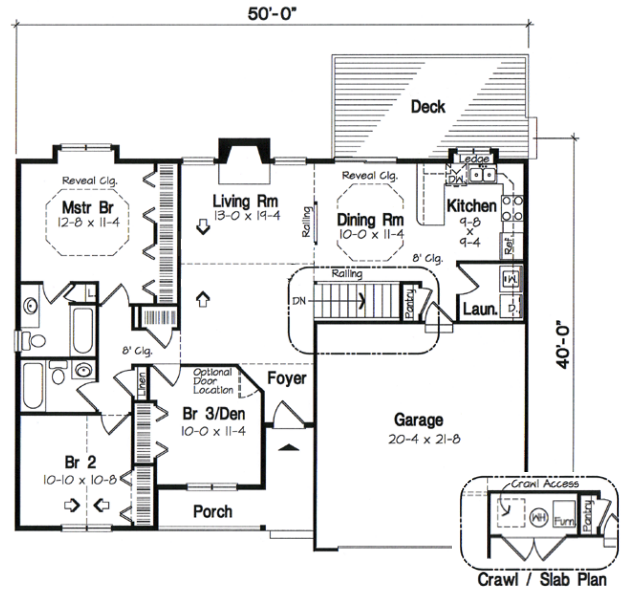
## RUTLAND 1,312 SQ. FT.

Oaks Collection



### SPECIFICATIONS

Main living area:	1,312 sq. ft.	Roof pitch:	6/12
Garage area:	459 sq. ft.	Main ceiling height:	8'
House width:	50'	Foundation:	B, C, S
House depth:	40'	Exterior walls:	2x6
Stories:	1	Fireplace:	Yes
Bedrooms:	3	First floor Master:	Yes
Baths:	2	Formal dining room:	Yes
Ridge height:	17'-6"	Plan #	24700



This economical ranch is filled with detail. Decorative ceiling treatments define most of the rooms. Large-scale windows shed light throughout while adding scale. Closets and a large garage offer plenty of storage space. Enjoy the serenity of sitting on the front porch or rear deck, or if you prefer to stay inside there is plenty of comfortable space in the living room with a vaulted ceiling.

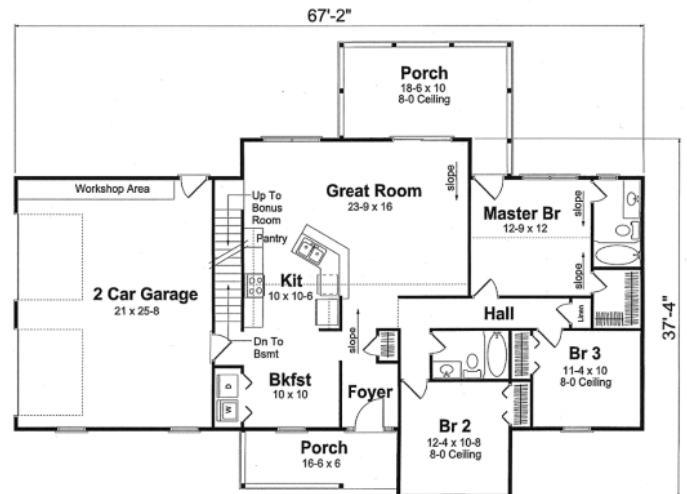
## PINEHURST 1,400 SQ. FT.

Oaks Collection



### SPECIFICATIONS

Main living area:	1,400 sq.ft.	Porch:	30 sq.ft.
Garage area:	539 sq.ft.	Deck:	172 sq.ft.
House Width:	66'	Formal Dining Room:	Yes
House Depth:	37'	Fireplace:	Yes
Bedrooms:	3	Main Ceiling Height:	8'
Full Baths:	2	Foundation:	B, C, S
Max Ridge Height:	21'	Walls:	2x6
Primary Roof Pitch:	8/12	Plan#:	74007

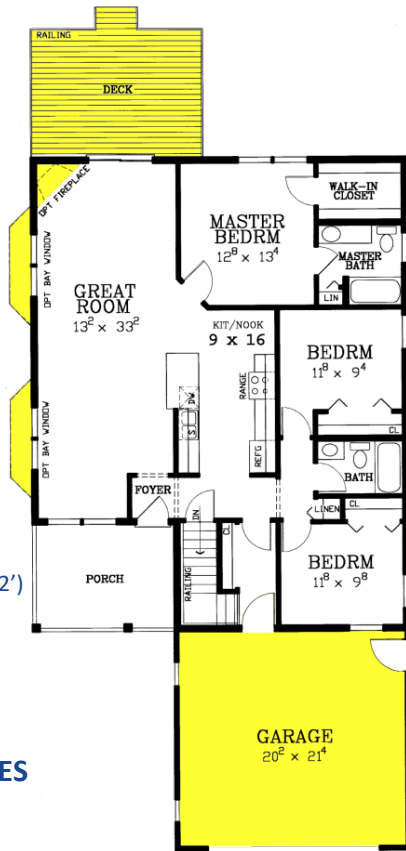


The curb-appeal of this ranch is undeniable due to the turned gables and staggered roof lines. The side-entry garage gives you ample space for your vehicles and the flexibility of a bonus room above. Enjoy your landscaping from either the front or rear large porches. Prepare your meals in the expansive kitchen overlooking the Great Room with a handy breakfast nook adjacent. Unwind at the end of your day in the luxurious master suite with a vaulted ceiling and generous closet.

Affordable Collection **LEXINGTON** 1,405– 1,433 SQ.FT.



Lexington Enhanced Plan



### ENHANCEMENTS

- Two car garage (20'x22')
- Rear deck with railing (16'x12')
- Angle bay windows
- Corner fireplace

### STANDARD FEATURES

- Front porch
- Immense great room

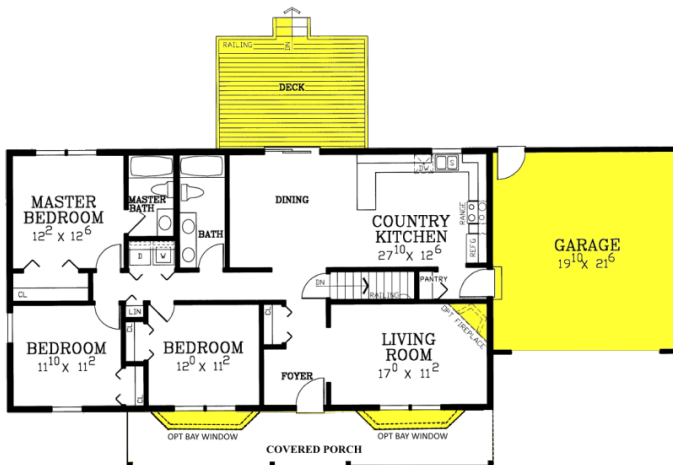
### SPECIFICATIONS

Living area:	1,405 sq.ft	Garage area:	440 sq.ft
Enhanced area:	1,433 sq.ft.	Porch area:	104 sq.ft.
Bedrooms:	3	Deck area:	192 sq.ft.
Baths:	2	Main ceiling height:	8'
House width:	35'	Foundation:	B, C, S
House depth:	44'	Walls:	2x4, 2x6
Primary roof pitch:	6/12		

Affordable Collection **HICKORY** 1,456 – 1,492 SQ.FT



Hickory Value Plan



### ENHANCEMENTS

- Two car garage (20'x22')
- Rear deck with railing (16'x12')
- Angle bays in living room & bedroom
- Corner fireplace

### STANDARD FEATURES

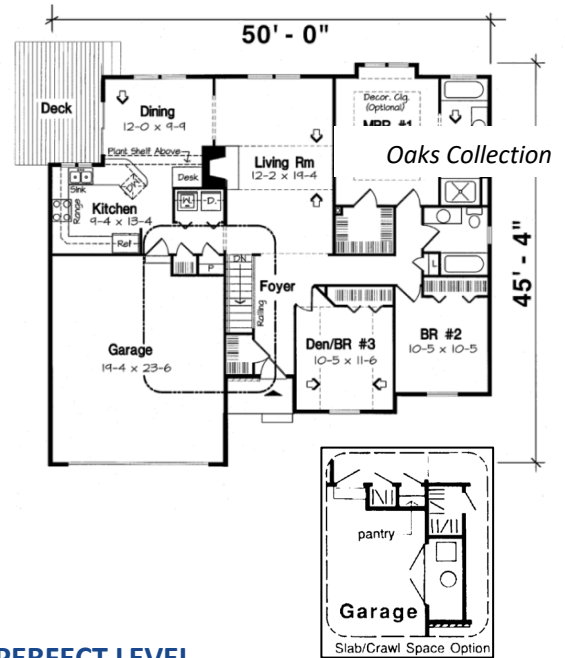
- Front porch

### SPECIFICATIONS

Living area:	1,456 sq.ft.	Garage area:	440 sq.ft.
Enhanced area:	1,492 sq.ft.	Porch area:	72 sq.ft.
Bedrooms:	3	Deck area:	192 sq.ft.
Baths:	2	Main ceiling height:	8'
House width:	52'	Foundation:	B, C, S
House depth:	28'	Walls:	2x4, 2x6
Primary roof pitch:	6/12		

# RANCH

**OXFORD** 1,456 SQ. FT. *Oaks Collection*



## SPECIFICATIONS

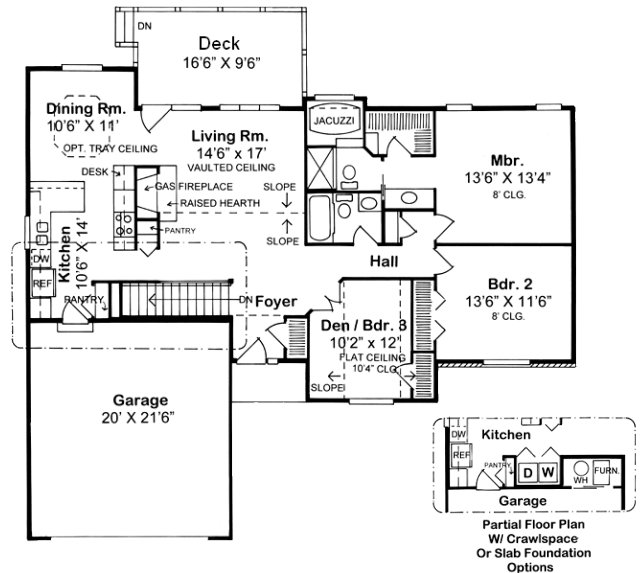
Total Living Area:	1,456 sq.ft.	Garage area:	456 sq.ft.
Garage bays:	2	House width:	50'
House depth:	45'5"	Bedrooms:	3
Full baths:	2	Primary Roof Pitch:	6/12
Porch:	32 sq.ft.	Deck:	140 sq.ft.
Main Ceiling Height:	8'	Vaulted Ceiling:	Yes
Foundation:	B, C, S	Walls:	2x6
		Plan#:	20164

## ONE PERFECT LEVEL

This big-hearted home delivers all the necessities, plus some! The entry foyer leads to a big, bright living room with fireplace. The kitchen is loaded with wholesome ingredients: lunch counter, recipe desk, shelving, storage, laundry and open access to the dining room. Sleeping quarters are nestled on the opposite side of the home. The master suite with walk-in closet and wonderful window has a private bath with a tub tucked beneath a window.

**SAVANNAH** 1,492 SQ.FT.

*Oaks Collection*



## SPECIFICATIONS

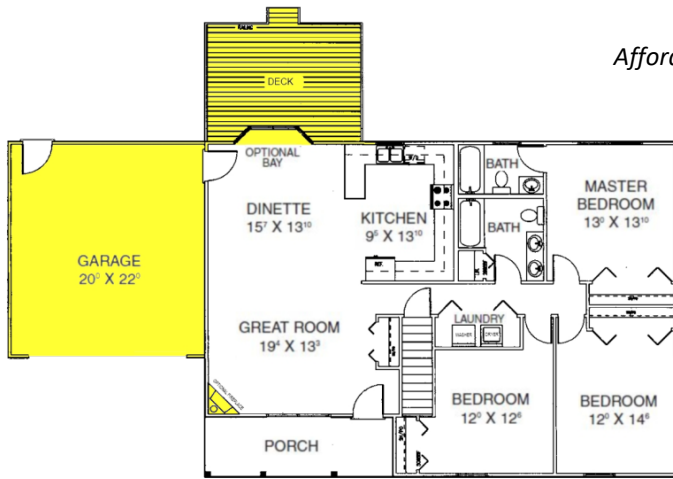
Main Living Area:	1,492 sq.ft.	Porch:	30 sq.ft.
Garage area:	462 sq.ft.	Deck:	172 sq.ft.
House Width:	56'	Formal Dining Room:	Yes
House Depth:	48'	Fireplace:	Yes
Bedrooms:	3	Main Ceiling Height:	8'
Full Baths:	2	Foundation:	B, C, S
Max Ridge Height:	19'	Walls:	2x6
Primary Roof Pitch:	8/12	Plan#:	34150

## GRACEFUL SHAPES

The peaked roofs, special windowing and covered entry give this home its well-bred appeal. Entrepreneurs and work-at-home professionals appreciate the dramatic Palladian window in the home office, and the living room is casual with fireplace and sloped ceiling. The dining area takes on a formal facade with octagonal ceiling treatment. Outfitted with breakfast counter, compact cabinetry and cook space, the kitchen sees plenty of action.

Affordable Collection

## LOYALHANNA 1,518 – 1,530 SQ. FT.



### ENHANCEMENTS

- Two car garage (20'x22')
- Rear deck with railing (16'x12')
- Corner fireplace
- Patio door
- Angle bay patio door

### STANDARD FEATURES

- Front porch

### SPECIFICATIONS

Living area:	1,518 sq.ft	Garage area:	440 sq.ft
Enhanced area:	1,530 sq.ft	Porch area:	114 sq.ft.
Bedrooms:	3	Deck area:	192 sq.ft.
Baths:	2	Formal dining?	No
House width:	48'	Great room?	Yes
House depth:	34'	Fireplace?	Optional
Main ceiling height:	8'	Foundation:	B, C, S
Primary roof pitch:	6/12	Walls:	2x4, 2x6

Affordable Collection

## WELLSBURG 1,533 – 1,559 SQ.FT.



Wellsburg Value Plan

### ENHANCEMENTS

- Rear deck with railing (16'x12')
- Fireplace

### STANDARD FEATURES

- 2 Car garage
- Large laundry room

### SPECIFICATIONS

Living area:	1,533 sq.ft.	Garage area:	528 sq.ft.
Enhanced area:	1,559 sq.ft	Porch area:	24 sq.ft.
Bedrooms:	3	Deck area:	192 sq.ft.
Baths:	2	Main ceiling height:	8'
House width:	50'	Foundation:	B, C, S
House depth:	54'	Walls:	2x4, 2x6
Primary roof pitch:	6/12		

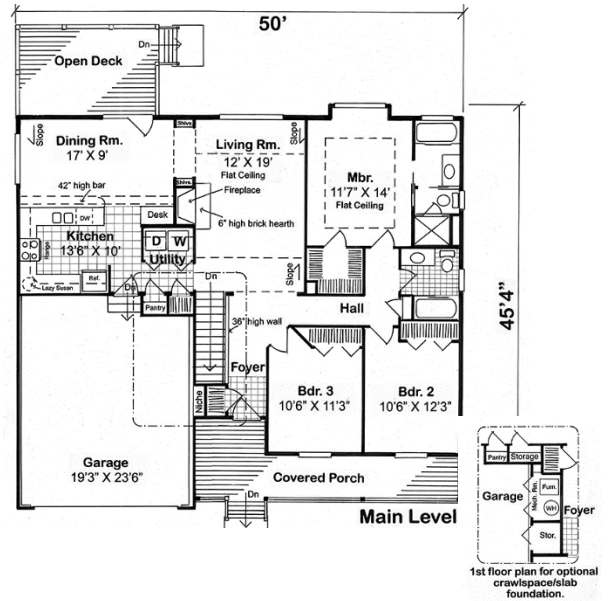
# RANCH

## RICHFIELD 1,539 SQ. FT. Oaks Collection



### SPECIFICATIONS

Main living area:	1,539 sq. ft.	Roof Framing:	Trusses
Garage area:	460 sq. ft.	Main ceiling height:	8'
House width:	50'	Foundation:	B, C, S
House depth:	54'	Exterior walls:	2x6
Stories:	1	Fireplace:	Yes
Bedrooms:	3	First floor Master	Yes
Baths:	2	Formal dining room	Yes
Ridge height:	21'	Plan #	24721
Roof pitch:	6/12		



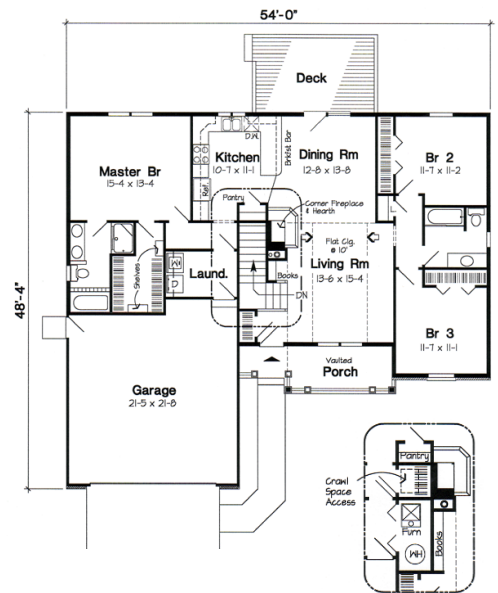
This charming home design boasts an efficient and functional floor plan that all adds up to comfort. A welcoming foyer glides straight ahead to the living room with built-ins and fireplace, or it follows a hallway where all three bedrooms are tucked in comfortably. The bright master suite is a treat with window seat, walk-in closet, and ceiling treatment. The master bath features a window over the tub and separate toilet. The U-shaped kitchen has it all—recipe desk, peninsula counter to dining room, and convenient laundry area.

## GLENBROOK 1,568 SQ. FT. Oaks Collection



### SPECIFICATIONS

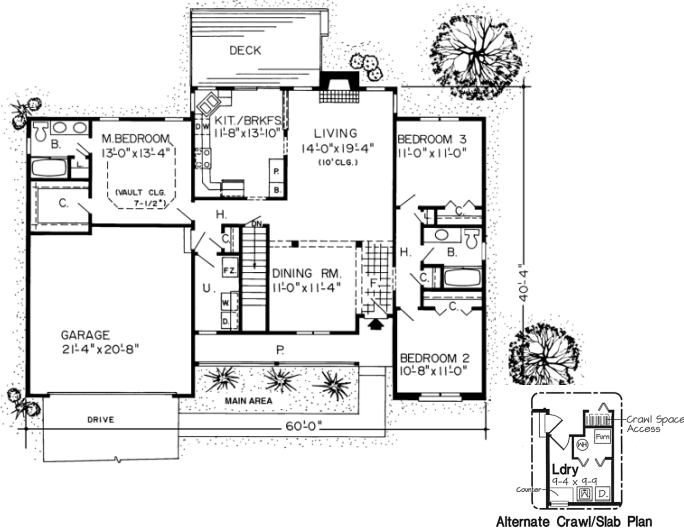
Main living area:	1,568 sq. ft.	Roof Framing:	Trusses
Garage area:	504 sq. ft.	Main ceiling height:	8'
House width:	54'	Foundation:	B, C, S
House depth:	48'	Exterior walls:	2x6
Stories:	1	Fireplace:	Yes
Bedrooms:	3	First floor Master	Yes
Baths:	2	Formal dining room	Yes
Ridge height:	19'	Plan #	22020
Roof pitch:	6/12		



This traditional ranch features a large front palladium window that gives great curb appeal as well as a view of the front yard from the living room. The vaulted ceiling in the living room adds to the architectural interest and to the spacious feel of the room. The dining room adjoins the living room and has sliders to the wood deck. A built-in pantry, double sink and breakfast bar highlight the efficient kitchen. The private master suite is located at the opposite end of the house from the other bedrooms. A large walk-in closet and a private bath with a double vanity add to the convenience of the suite. The two additional bedrooms share the full hall bath.

Oaks Collection

## COTTAGEWOOD 1,575 SQ. FT.



### ONE LEVEL LIVING WITH A TWIST

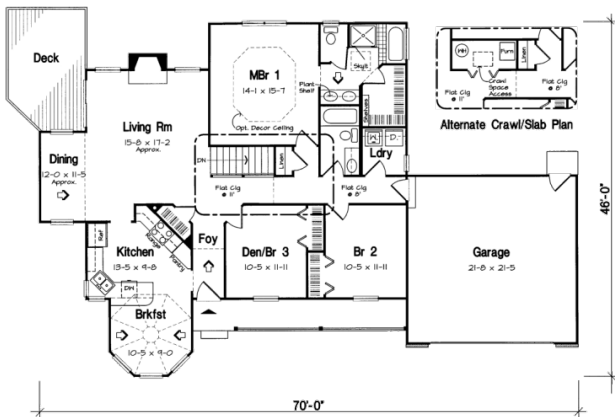
Here's an inviting home with a distinctive difference. Active living areas are wide-open and centrally located. From the foyer, you'll enjoy a full view of the spacious dining, living, and kitchen areas in one sweeping glance. You can even see the deck adjoining the breakfast room. The difference in this house lies in the layout of the bedrooms. Each is a private retreat, away from active areas. The master suite at the rear of the house features a full bath with double sinks. Two additional bedrooms, off in their own wing, share a full bath.

### SPECIFICATIONS

Total Living Area:	1,575 sq.ft.	Porch:	114 sq.ft.
Garage area:	475 sq.ft.	Deck:	172 sq.ft.
House Width:	60'	Formal Dining Room:	Yes
House Depth:	42'10"	Fireplace:	Yes
Bedrooms:	3	Main Ceiling Height:	8'-10'
Full Baths:	2	Foundation:	B, C, S
Max Ridge Height:	19'6"	Walls:	2x6
Primary Roof Pitch:	6/12	Plan:	20083

Oaks Collection

## ALBANY 1,583 SQ.FT



### EVERYDAY PLEASURES...

...in your own gazebo-style breakfast room bright with windows and within reach of the kitchen with far-reaching lunch counter. The dining room, on the opposite side of the kitchen, features a large window and sliders to the exterior deck. The flow is optimally smooth as the living room with fireplace is wide open. Bedrooms #2 and #3 have bird's-eye-view of the front porch. A full bath with laundry facilities is theirs to share.

### SPECIFICATIONS

Total Living Area:	1,583 sq.ft.	Porch:	111 sq.ft.
Garage area:	484 sq.ft.	Deck:	153 sq.ft.
House Width:	70'	Fireplace:	Yes
House Depth:	46'	1st Floor Master:	Yes
Bedrooms:	3	Main Ceiling Height:	8'
Full Baths:	2	Foundation:	B, C, S
Max Ridge Height:	20'	Walls:	2x6
Primary Roof Pitch:	6/12	Plan:	34043

# RANCH

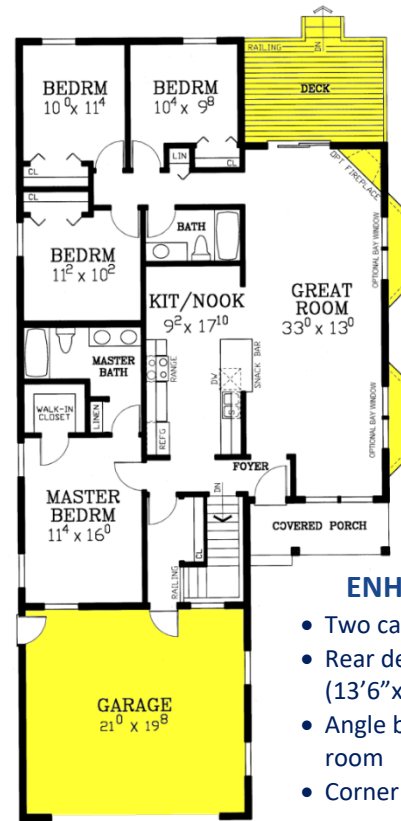
## WINCHESTER 1,620– 1,648 SQ.FT. *Affordable Collection*



Winchester partially Enhanced Plan

### SPECIFICATIONS

Living area:	1,620 sq.ft	Porch area:	65 sq.ft.
Enhanced area:	1,648 sq.ft	Deck area:	124 sq.ft.
Bedrooms:	4	Formal dining?	No
Baths:	2	Great room?	Yes
House width:	35'	Fireplace?	Optional
House depth:	54'	Main ceiling height:	8'
Primary roof pitch:	6/12	Foundation:	B, C, S
Garage area:	440 sq.ft	Walls:	2x4, 2x6



### ENHANCEMENTS

- Two car garage (20'x22')
- Rear deck with railing (13'6" x 10')
- Angle bay windows in great room
- Corner fireplace

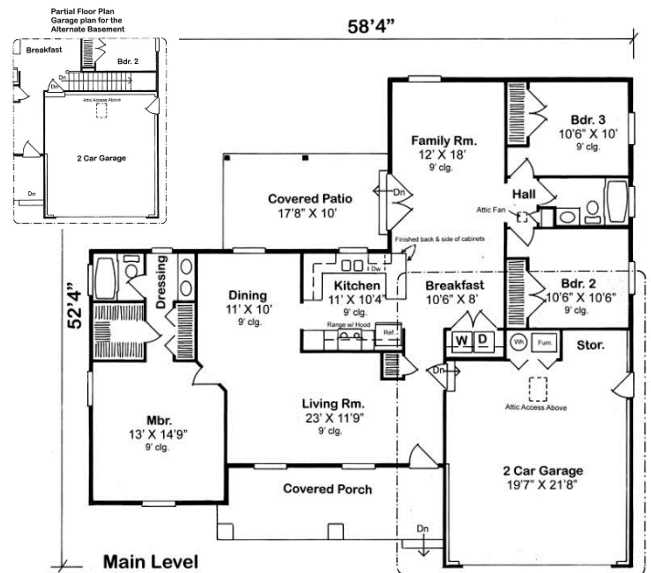
**LARGE GALLEY KITCHEN • BIG MASTER SUITE**

## KINGSLEY 1,631 SQ. FT. *Oaks Collection*

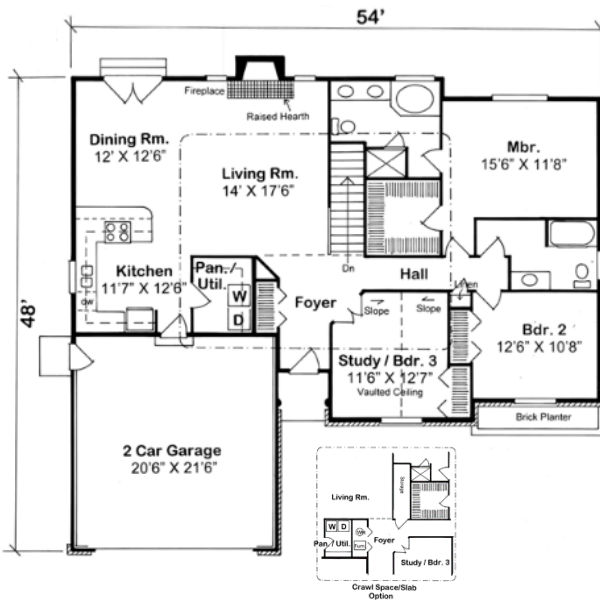


### SPECIFICATIONS

Main living area:	1,631 sq. ft.	Roof Framing:	Trusses
Garage area:	470 sq. ft.	Main ceiling height:	9'
House width:	58'-4"	Foundation:	B, C, S
House depth:	25'-4"	Exterior walls:	2x6
Stories:	1	Fireplace:	No
Bedrooms:	3	First floor Master	Yes
Baths:	2	Formal dining room	No
Ridge height:	22'	Plan #	25200
Roof pitch:	7/12		



One-level living is a breeze in this attractive, three-bedroom beauty designed with your budget in mind. The covered porch adds a rustic touch to the facade. Step through the front door into a huge living room. Active areas surrounding a spacious patio at the rear of the house are served by a centrally located galley kitchen. Eat in the formal dining room, or the handy breakfast room that adjoins the huge family room. A short hall leads to a convenient full bath and two bedrooms. The master suite, tucked off the living room, features double closets and vanities for busy morning routines.



The dreamy charmer you've always wanted is here and the space is generous. Features include an entry foyer, and smart home office (or third bedroom) right at the front of the house. A fireplace in the large living room flows into the open dining area. The kitchen is full of features: bright window, breakfast counter, open access to the dining room, and close-at-hand laundry area. This home has a private side, too. The master suite with large walk-in has a lavish bath with shower and double sinks. An additional bedroom overlooks a built-in garden planter.

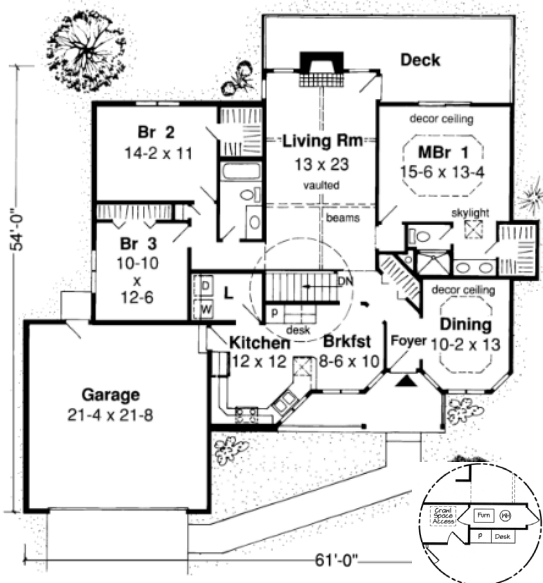
Oaks Collection

## HILLCREST 1,636 SQ. FT.



### SPECIFICATIONS

Main living area:	1,636 sq. ft.	Roof pitch:	8/12
Garage area:	454 sq. ft.	Roof Framing:	Trusses
House width:	54'	Main ceiling height:	Varies
House depth:	48'	Foundation:	B, C, S
Stories:	1	Exterior walls:	2x6
Bedrooms:	3	Fireplace:	Yes
Baths:	2	First floor Master:	Yes
Ridge height:	19'-4"	Plan #	24701



### RIISING STATUS

This is a highly sophisticated 1,686 sq. ft. layout. Features include a covered front porch, stylish foyer, and impressive ceiling treatments throughout. The showcase kitchen brims with natural light. More plusses include planning desk, breakfast area, and handy laundry area. A beam and vaulted living room adds dizzying dimension. Family can gather at the fireplace or outdoors on the back deck. The main-floor master bedroom is charmed by a special ceiling, deck entry, and walk-in closet and sky-lit master bath.

Oaks Collection

## CLARISSA 1,686 SQ. FT.



### SPECIFICATIONS

Total Living Area:	1,686 sq.ft.	Porch:	96 sq ft
Garage area:	484 sq.ft.	Deck:	309 sq ft
House Width:	61'	Formal Dining:	Yes
House Depth:	54'	Fireplace:	Yes
Bedrooms:	3	Main Ceiling Height:	8'
Full Baths:	2	Foundation:	B, C, S
Max Ridge Height:	23'	Walls:	2x6
Primary Roof Pitch:	8/12	Plan:	34029

# RANCH

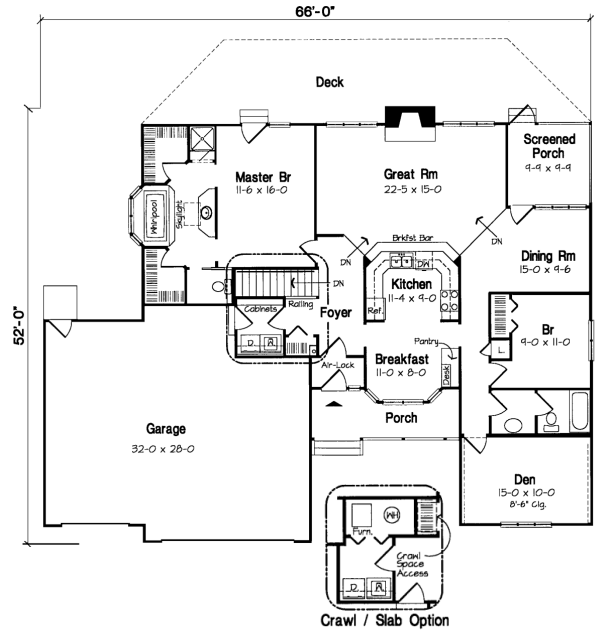
## HARTWOOD 1,738 SQ.FT

Oaks Collection



### SPECIFICATIONS

Total Living Area:	1,738	Porch:	176 sq.ft.
Garage area:	896 sq.ft.	Deck:	430 sq.ft.
House width:	66'	Formal Dining:	Yes
House depth:	52'	Fireplace:	Yes
Bedrooms:	2 (plus den)	Main ceiling height:	8'
Full Baths:	2	Foundation:	B, C, S
Max Ridge Height:	24' 6"	Walls:	2x6
Primary Roof Pitch:	8/12	Plan#:	10839



### YOUR OWN RANCH

This home delivers a three-car garage with spacious work area, comfy front and back porches and a big welcoming entry foyer. The kitchen spreads casually to a breakfast nook and beyond to formal dining. The sunken great room has WOW appeal, a fireplace, plus entry to the screened porch. The master suite owns two enormous walk-ins and sky-lit bathroom.

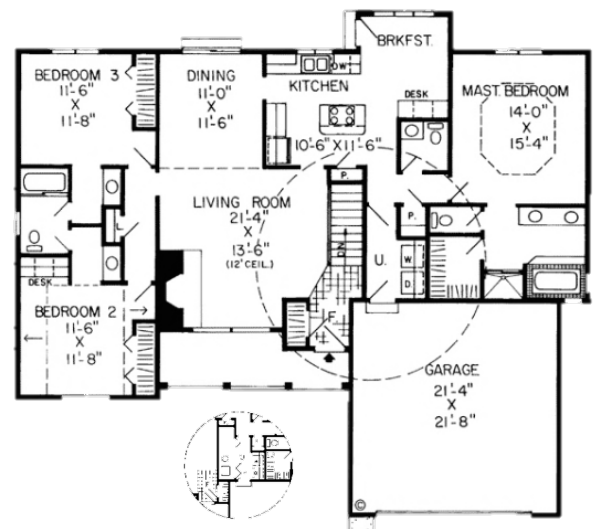
## HAVENWOOD 1,831 SQ. FT.

Oaks Collection



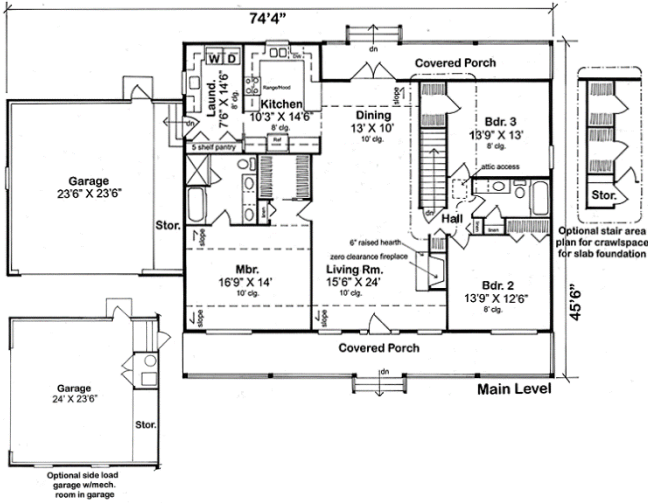
### SPECIFICATIONS

Total Living Area:	1,831	Porch:	121 sq.ft.
Garage area:	484 sq.ft.	Formal Dining Room:	Yes
Garage Bays:	2	Fireplace:	Yes
House Width:	60'0	Main Ceiling Height:	8'
House Depth:	52'0	Vaulted Ceiling:	Yes
Bedrooms:	3	Foundation:	B, C, S
Baths:	2 1/2	Walls:	2x6
Max Ridge Height:	22'	Plan:	34031
Primary Roof Pitch:	8/12		



### PRIVATE MASTER SUITE WITH AMENITIES

This modernized ranch design has all the features today's home buyers are demanding. Notice the tiled foyer leading to the fireplace in the living room that shares a wide open space with the formal dining room. The bright kitchen has a cook-top island, two pantries, a built-in desk and a breakfast nook for family meals. The master suite is behind the garage for protection from street noises and has a five-piece compartmented bath and a large walk-in closet.



A traditional family home with plenty of convenience and comfort, this home is a tested classic. The open living and dining rooms keep everyone together, while the large laundry room near the side entrance keeps the mess at bay. The generously sized master bedroom has 10' ceilings, a walk in closet and double vanity bath with both a shower and tub. Two additional bedrooms on the other side of the home share bath. Porches on both the front and back of the home let you enjoy all the views. The spacious 2-car garage provides easy access to the kitchen & laundry area for easy unloading of your vehicles.

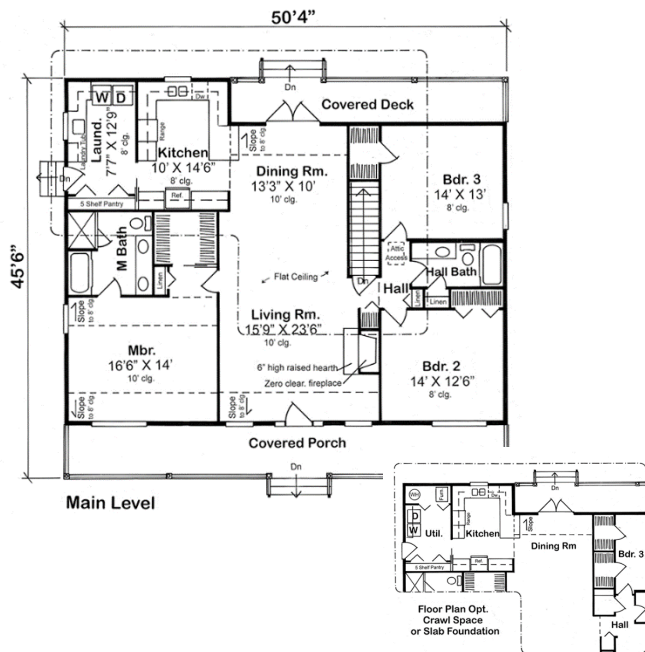
Oaks Collection

## WARWICK 1,831 SQ.FT



### SPECIFICATIONS

Main living area:	1,831 sq. ft.	Roof pitch:	7/12
Garage area:	576 sq. ft.	Roof Framing:	Trusses
House width:	74'-4"	Main ceiling height:	8'
House depth:	45'-6"	Foundation:	B, C, S
Stories:	1	Exterior walls:	2x6
Bedrooms:	3	Fireplace:	Yes
Baths:	2	First floor Master:	Yes
Ridge height:	19'-6"	Plan #	25103



Oaks Collection

## COVINGTON 1,831 SQ.FT



### SPECIFICATIONS

Main living area:	1,831 sq. ft.	Roof pitch:	7/12
Garage area:	N/A	Roof Framing:	Trusses
House width:	50'-4"	Porch/deck area:	467 sq. ft.
House depth:	45'-6"	Main ceiling height:	8'
Stories:	1	Foundation:	B, C, S
Bedrooms:	3	Exterior walls:	2x6
Baths:	2	Fireplace:	Yes
Ridge height:	19'-6"	First floor Master:	Yes
		Plan #	25102

Considered a great starter home for its basic and economical design. Offering larger bedrooms than what one would expect in an affordable ranch design, this is a popular floor plan. Other features: Large laundry room, fireplace, covered front and rear porches and foundation options Affordable home design with this basic ranch house plan with gabled front and large covered porch.

# RANCH

**NORTHPORT** 1,858 – 1,876 SQ.FT.

*Affordable Collection*



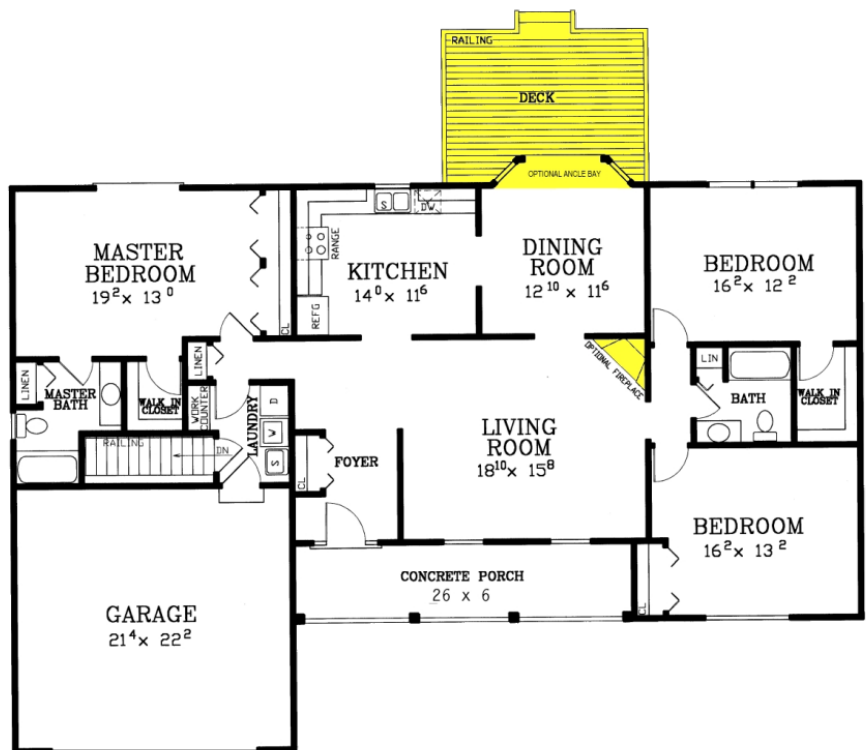
Northport Enhanced Plan

## ENHANCEMENTS

- Rear deck with railing (16'x12')
- Corner fireplace
- Dormers
- Angle bay windows

## SPECIFICATIONS

Living area:	1,858 sq.ft
Enhanced area:	1,876 sq.ft
Bedrooms:	3
Baths:	2
House width:	66'
House depth:	44'
Primary roof pitch:	6/12
Garage area:	440 sq.ft
Porch area:	156 sq.ft.
Deck area:	192 sq.ft.
Main ceiling height:	8'
Foundation:	B, C, S



**STANDARD FRONT PORCH • STANDARD 2-CAR GARAGE**

Oaks Collection

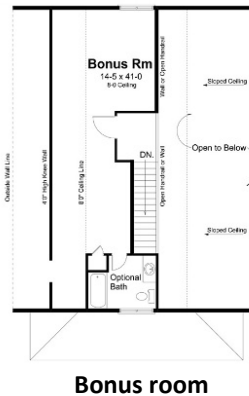
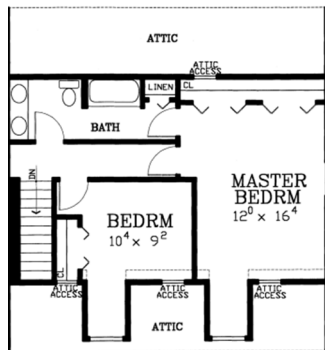


### OPTIONS AROUND

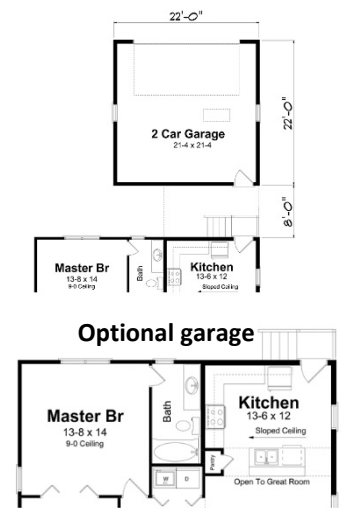
This charming traditional bungalow will welcome you home every day with its spacious front porch. The expansive great room & dining area are easily accessible for serving from the large U-Shaped kitchen, or choose the optional kitchen with a cooking island and pantry area. You'll never feel cramped with the first floor master suite, and there's plenty of space for family and guests with the two more bedrooms and a bonus room upstairs. This plan gives you lots of options to build it with just the right features to fit your lifestyle and budget.

### SPECIFICATIONS

Total Living Area:	1,428 sq.ft.	Primary Roof Pitch:	10/12
Upper Bonus Area:	585 sq.ft.	Porch:	170 sq.ft.
Garage area:	484 sq.ft.	Deck:	No
House Width:	34'	Fireplace:	Yes
House Depth:	48'	Main Ceiling Height:	9'
House Depth w/ garage:	78'	Upper Ceiling Height:	8'
Bedrooms:	3	Foundation:	B, C, S
Baths:	2	Walls:	2x6
Max Ridge Height:	25'	Plan:	74001



Bonus room



Optional garage

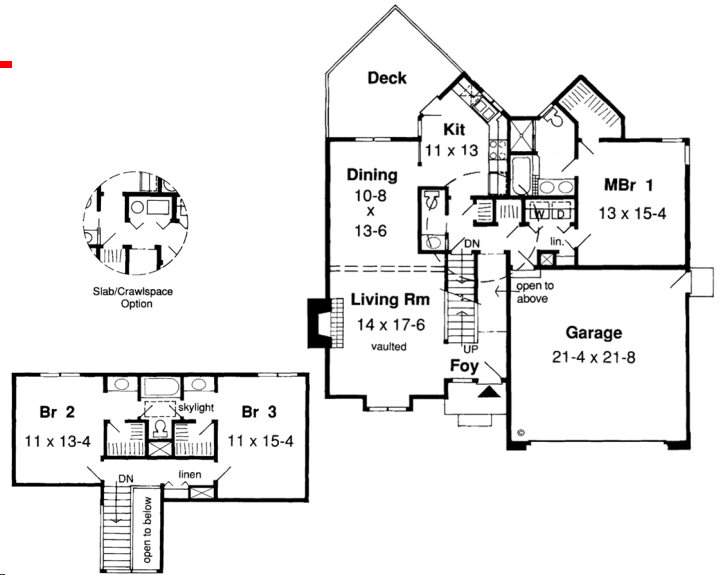
Optional kitchen

Photos or renderings will vary from actual plan.

# 1 1/2 STORY

## AUBURN 1,784 SQ.FT.

Oaks Collection



### SPECIFICATIONS

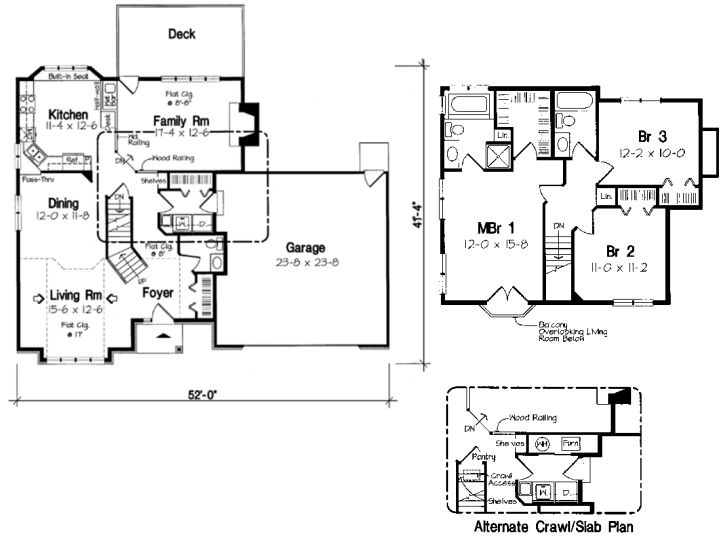
Total Living Area:	1,784 sq.ft.	Primary Roof Pitch:	6/12
Main Living Area:	1,187 sq.ft.	Porch:	35 sq.ft.
Upper Living Area:	597 sq.ft.	Deck:	166 sq.ft.
Garage area:	484	Fireplace:	Yes
House Width:	46'0	Main Ceiling Height:	8'
House Depth:	46'4	Upper Ceiling Height:	8'
Bedrooms:	3	Foundation:	B, C, S
Baths:	2-1/2	Walls:	2x6
Max Ridge Height:	24'0	Plan:	34800

### GOOD LIVING FOR SMALLER LOTS

A contemporary look both front and back makes this home stand out in any neighborhood. Beside the two-story foyer, you'll find a living room with its own fireplace and tall bump-out window, while the dining room lies in the rear. An angular kitchen easily accesses the dining room and includes sliding doors to the deck, making dining outdoors a possibility. The laundry niche leads into a first-floor master suite. On the second floor, twin bedrooms share a skylit full bath

## HIGHLAND 1,894 SQ.FT.

Oaks Collection



### SPECIFICATIONS

Total Living Area:	1,894 sq.ft.	Porch:	25 sq.ft.
Main Living Area:	1,108 sq.ft.	Deck:	178 sq.ft.
Upper Living Area:	786 sq.ft.	Formal Dining Room:	Yes
Garage area:	575 sq.ft.	Fireplace:	Yes
House Width:	52'	Main Ceiling Height:	8'
House Depth:	41'4	Upper Ceiling Height:	8'
Bedrooms:	3	Foundation:	B, C, S
Baths:	2 1/2	Walls:	2x6
Max Ridge Height:	26'	Plan:	20367
Primary Roof Pitch:	6/12		

### STATELY PRESENCE

A slope ceiling accentuates the two-story window in the living room. The kitchen has a pass-through to the dining room and views the sunken family room beyond a built-in desk, wet bar, and fireplace. The master bedroom offers a balcony that overlooks the living room.

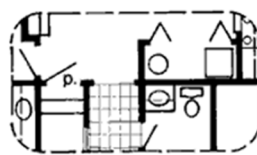
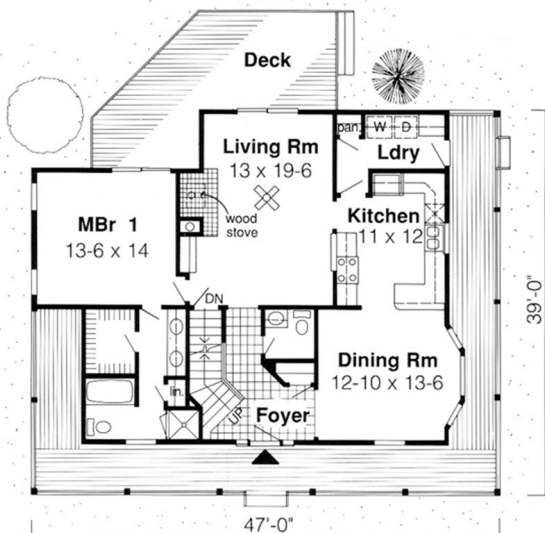


### FARMHOUSE FLAVOR

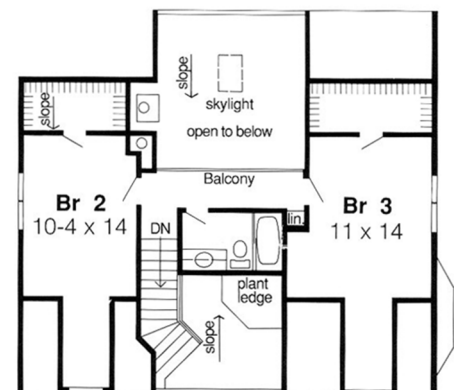
The charm of an old-fashioned farmhouse combines with sizzling contemporary excitement in this three-bedroom home. Classic touches abound, from the clapboard exterior with its inviting, wraparound porch, to the wood stove that warms the entire house. Inside, the two-story foyer, crowned by a plant ledge high overhead, affords a view of the soaring, sky-lit living room and rear deck beyond sliding glass doors. Entertain in the formal dining room with bay window, just steps away from the kitchen. Upstairs, you'll find a full bath and two more bedrooms, each with a walk-in closet and cozy gable sitting nook.

### SPECIFICATIONS

Total Living Area:	1,907 sq.ft.	Porch:	465 sq.ft.
Main Living Area:	1,269 sq.ft.	Deck:	250 sq.ft.
Upper Living Area:	638 sq.ft.	Formal Dining Room:	Yes
House Width:	47'	1st Floor Master:	Yes
House Depth:	39'	Main Ceiling Height:	8'
Number of Stories:	2	Upper Ceiling Height:	8'
Bedrooms:	3	Foundation:	B, C, S
Baths:	2 1/2	Walls:	2x6
Max Ridge Height:	24'	Plan:	10785



Slab/Crawl Space Option



# 1 1/2 STORY

**CAPE MAY** 1,915 – 2,079 SQ.FT.

Affordable Collection



Cape May Enhanced Plan

## SPECIFICATIONS

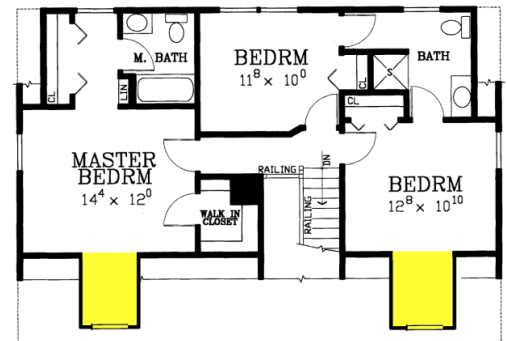
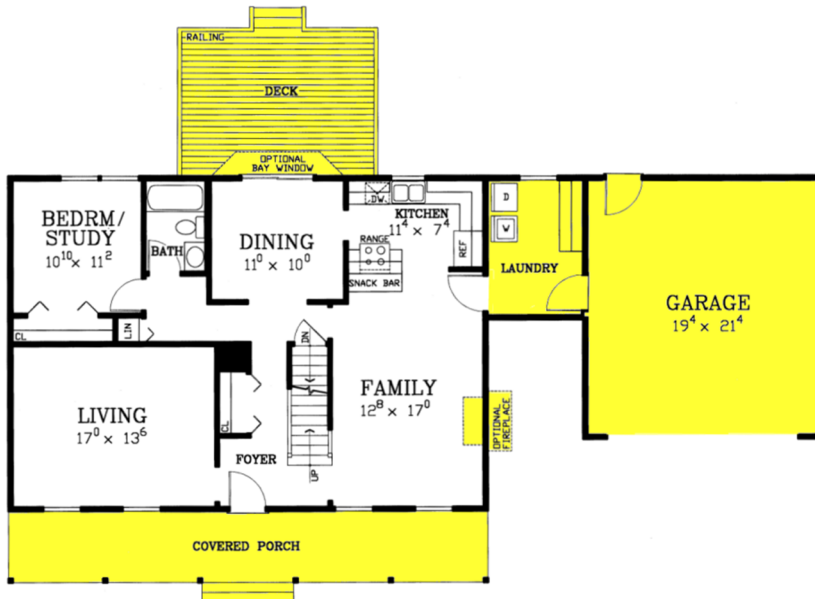
Living area:	1,915 sq.ft.	Primary roof pitch:	10/12
Enhanced area:	2,079 sq.ft.	Garage area:	440 sq.ft.
First floor area:	1,120 sq.ft.	Porch area:	240 sq.ft.
Upper level area:	795 sq.ft.	Deck area:	192 sq.ft.
Bedrooms:	4	Main ceiling height:	8'
Baths:	3	Foundation:	B, C, S
House width:	40'	Walls:	2x4, 2x6
House depth:	28'		

## ENHANCEMENTS

- Two car attached garage (20'x22') with laundry room (8'x12')
- Rear deck with railing (16'x12')
- Angle bay window in dining room
- Full porch with railing (40'x6')
- Dormers (25 sq.ft. each)
- Fireplace



Cape May Enhanced Rear



# 1 1/2 STORY



Oaks Collection

## LIVINGSTONE 2,016 SQ.FT.

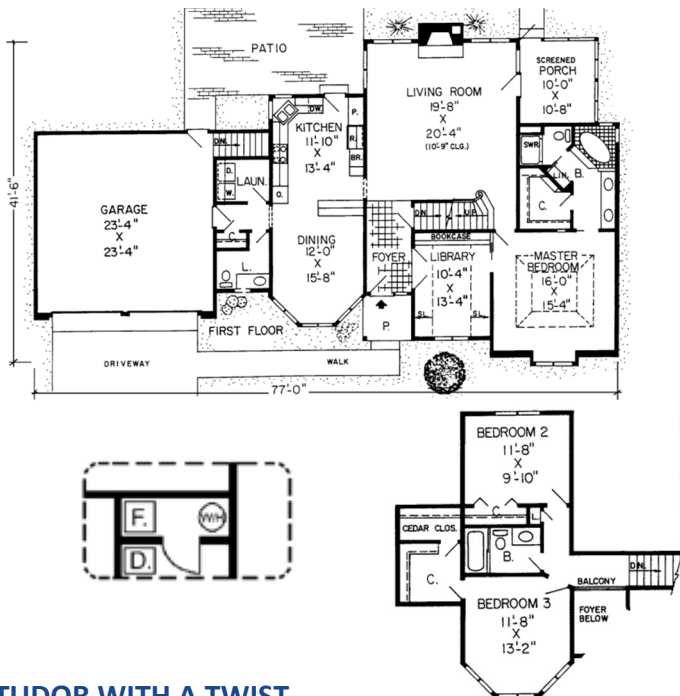


### SPECIFICATIONS

Total Living Area:	2,016 sq.ft.	Porch:	84 sq.ft.
Main Living Area:	1,496 sq.ft.	Deck:	95 sq.ft.
Upper Living Area:	520 sq.ft.	Formal Dining Room:	Yes
Garage area:	424 sq.ft.	Fireplace:	Yes
House Width:	61'0	1st Floor Master:	Yes
House Depth:	40'4	Main Ceiling Height:	8'
Bedrooms:	4	Upper Ceiling Height:	9'
Baths:	3	Foundation:	B, C, S
Max Ridge Height:	25'0	Walls:	2x6
Primary Roof Pitch:	12/12	Plan:	34049

### COMFORTABLE FAMILY LIVING

Sloping ceilings and open spaces characterize this four-bedroom home. The dining room off the foyer adjoins the breakfast room and the efficient kitchen. The beamed living room is crowned by a balcony overlook that links the upstairs bedrooms. The vaulted first-floor master suite features a private deck, walk-in closet, and full bath with a double vanity.



Oaks Collection

## FREMONT 2,176 SQ.FT.



### SPECIFICATIONS

Total Living Area:	2,176 sq.ft.	Porch:	135 sq.ft.
Main Living Area:	1,671 sq.ft.	Formal Dining Room:	Yes
Upper Living Area:	505 sq.ft.	Fireplace:	Yes
Garage area:	604 sq.ft.	1st Floor Master:	Yes
House Width:	77'	Main Ceiling Height:	8'
House Depth:	41'6	Upper Ceiling Height:	8'
Bedrooms:	3	Foundation:	B, C
Baths:	2 1/2	Walls:	2x4
Max Ridge Height:	28'	Plan:	10555
Primary Roof Pitch:	8/12		

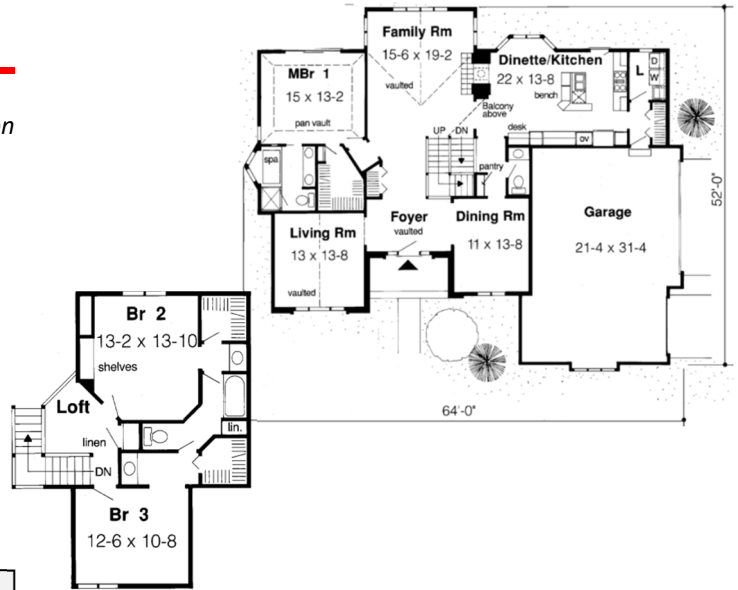
### TUDOR WITH A TWIST

Quaint, complex pitched rooflines and long, light-filled windows make this a very proper Tudor-style home befitting today's lifestyles. The living room is central to the layout, inviting folks to gather at the fireplace, hang out on the screened porch, join the hustle bustle in the kitchen, or take meals to the outdoor patio. The master suite with special ceiling and dreamy full bath enjoys main-floor access to the library and a front yard view.

# 1 1/2 STORY

## CARRIAGE HILL 2,372 SQ.FT.

Oaks Collection



### SPECIFICATIONS

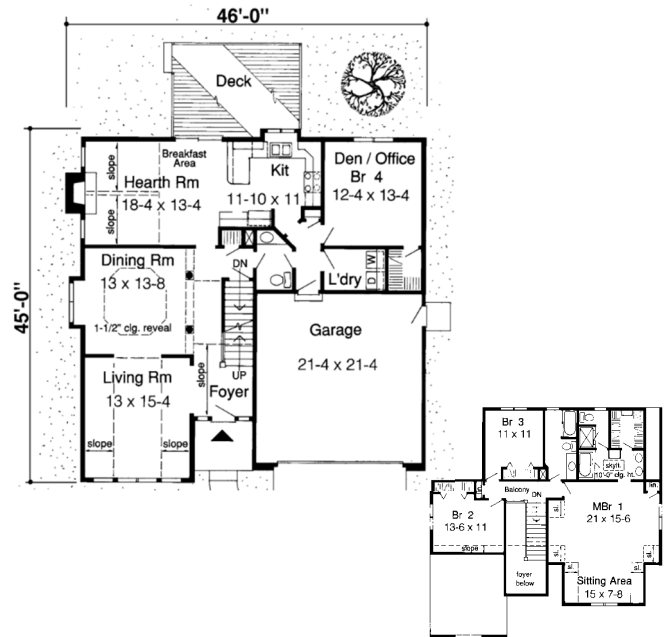
Total Living Area:	2,372 sq.ft.	Formal Dining Room:	Yes
Main Living Area:	1,752 sq.ft.	Fireplace:	Yes
Upper Living Area:	620 sq.ft.	1st Floor Master:	Yes
Garage area:	714 sq.ft.	Main Ceiling Height:	8'
House Width:	64'	Upper Ceiling Height:	8'
House Depth:	53'	Vaulted Ceiling:	Yes
Bedrooms:	3	Foundation:	B, C, S
Baths:	2 1/2	Walls:	2x4
Max Ridge Height:	29'6"	Plan:	20368
Primary Roof Pitch:	12/12		

### CLASSIC LOFTY VIEWS

If open space suits your taste, here's a sturdy stucco classic that fits the bill with style. The vaulted-foyer is flanked by a soaring living room with expansive arched window, and a formal dining room. Step up the stairs to the loft for a great view of the fireplace in the family room, leading to the spacious kitchen/dinette. While upstairs, notice the two bedrooms with walk-in closets and adjoining bath. The master suite, with its garden spa, private deck access and walk-in closet on the first floor, is just off the foyer.

## ANDOVER 2,483 SQ.FT.

Oaks Collection



### SPECIFICATIONS

Total Living Area:	2483 sq.ft.	Porch:	42 sq.ft.
Main Living Area:	1361 sq.ft.	Deck:	188 sq.ft.
Upper Living Area:	1122 sq.ft.	Formal Dining Room:	Yes
Garage area:	477 sq.ft.	Fireplace:	Yes
House Width:	46'0"	Main Ceiling Height:	8'
House Depth:	45'0"	Upper Ceiling Height:	8'
Bedrooms:	4	Foundation:	B, C, S
Baths:	2 1/2	Walls:	2x4
Max Ridge Height:	27'0"	Plan:	20134
Primary Roof Pitch:	7/12		

### NATURAL LIGHT ABOUNDS

This home offers design elements usually found in much larger homes. A 2-story foyer invites guests into the formal living room, which flows into the dining room, adorned with elegant columns and special ceiling details. Further inside, a cozy hearth room offers more casual entertaining options. The kitchen is designed for efficiency, with U-shaped counters and a snack bar serving the breakfast area. A secluded room adjoining the kitchen flexibly serves as a den, home office or 4th bedroom.

Oaks Collection



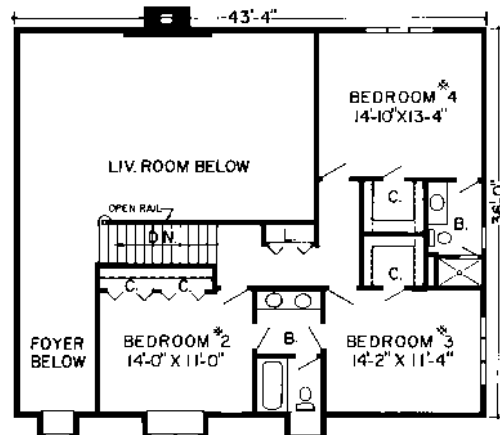
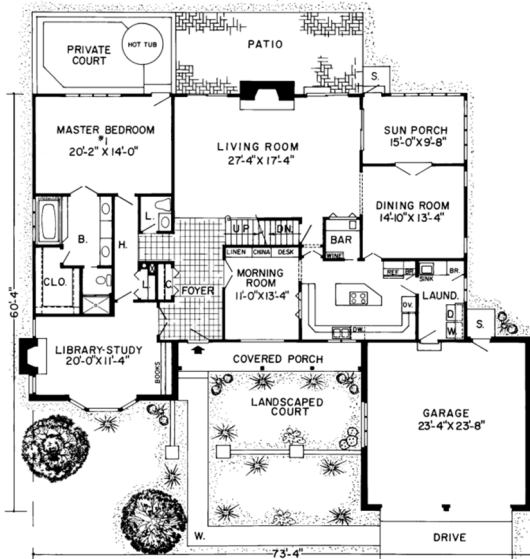
Alexandria with modified garage

### EVERYTHING YOU WANT!

What a design! The centrally located living room curves to a bar, the kitchen, or the sun porch which is shared with the dining room. The kitchen features a cook island and out-of-the-way laundry room. Most spectacular though is the kitchen's morning room with an elegant window to the porch front. The staircase overlooks the open foyer and living room. Bedroom #2, charmed by a dormer front window, shares a full bath with bedroom #3, and bedroom #4 gets a private bath.

### SPECIFICATIONS

Total Living Area:	3,440 sq.ft.	Porch:	257 sq.ft.
Main Living Area:	2,486 sq.ft.	Formal Dining Room:	Yes
Upper Living Area:	954 sq.ft.	Fireplace:	Yes
Garage area:	576 sq.ft.	Main Ceiling Height:	8'
House Width:	75'4"	Upper Ceiling Height:	8'
House Depth:	62'4"	Vaulted Ceiling:	Yes
Bedrooms:	4	Foundation:	B, C, S
Baths:	3 1/2	Walls:	2x6
Max Ridge Height:	35'	Plan:	10534
Primary Roof Pitch:	12/12		



Photos or renderings will vary from actual plan.

# 2 STORY

MT. AIRY 1,344 – 1,588 SQ.FT

Affordable Collection



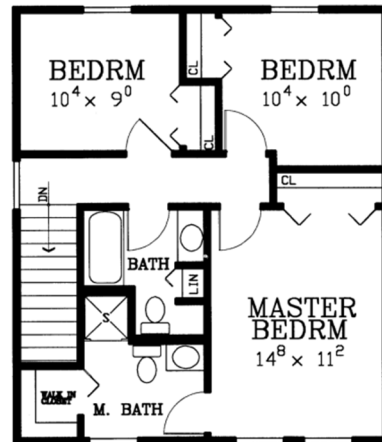
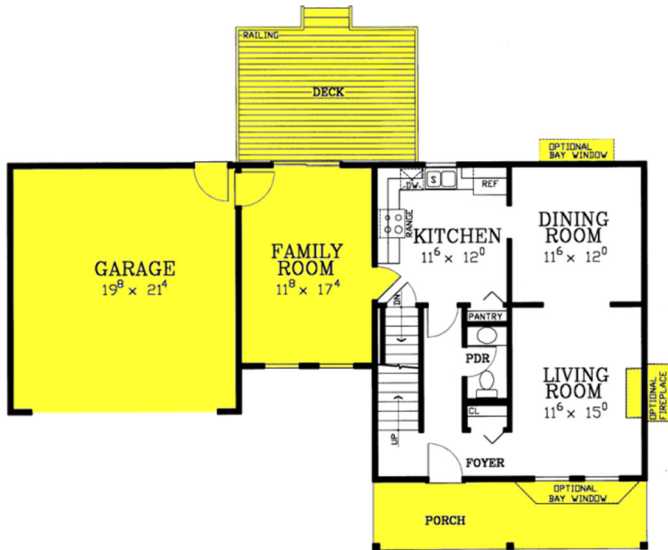
Mt. Airy Enhanced Plan

## SPECIFICATIONS

Living area:	1,344 sq.ft	Primary roof pitch:	6/12
Enhanced area:	1,588 sq.ft	Garage area:	440 sq.ft.
First floor area:	672 sq.ft.	Porch area:	144 sq.ft.
Upper level area:	672 sq.ft.	Deck area:	192 sq.ft.
Bedrooms:	3	Main ceiling height:	8'
Baths:	2 ½	Foundation:	B, C, S
House width:	24'	Walls:	2x4, 2x6
House depth:	28'		

## ENHANCEMENTS

- Two car garage (20'x22')
- Front porch with railing (24'x6')
- Rear deck with railing (16'x12')
- Family room (adds 216 sq.ft.)
- Box bay window
- Angle bay window
- Fireplace



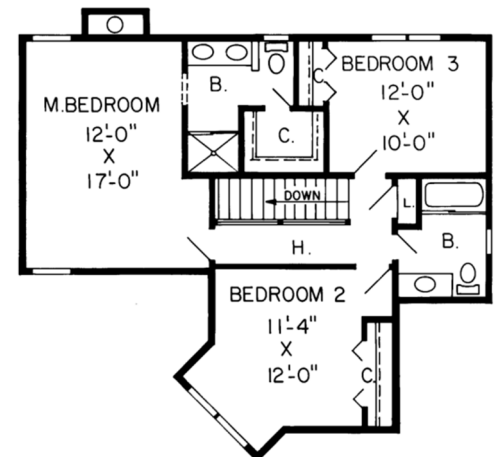
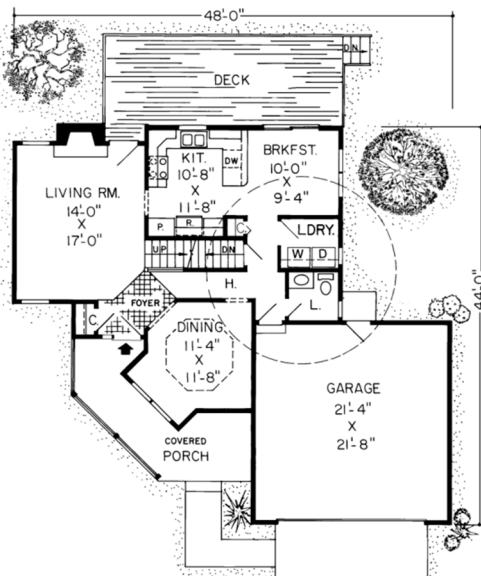


### COUNTRY PORCH & DELIGHTFUL LIVING AREAS

The exterior is full of farmhouse flavor while the interior cultivates contemporary comfort. The dining room with bay window and soaring ceiling overlooks the front porch. The living room features a wood-burning stove and entry to the huge outdoor deck. The second story master bedroom spreads from front to back of the house. A shower stall, double sinks, and walk-in closet complete the master bath. A front dormer nurtures Bedroom #2 while #3 flourishes in a bright space on the other side of the shared bath

### SPECIFICATIONS

Total Living Area:	1763 sq.ft.	Primary Roof Pitch:	8/12
Main Living Area:	909 sq.ft.	Porch:	152 sq.ft.
Upper Living Area:	854	Deck:	263 sq.ft.
Garage Type:	491 sq.ft.	Formal Dining Room:	Yes
House Width:	48'	Fireplace:	Yes
House Depth:	44'	Main Ceiling Height:	8'
Bedrooms:	3	Upper Ceiling Height:	8'
Baths:	2 1/2	Foundation:	B, C, S
Half Baths:	1	Walls:	2x6
Max Ridge Height:	29'	Plan:	34901



# 2 STORY

## BRIDGEVILLE 1,900 – 1,912SQ.FT.

Affordable Collection



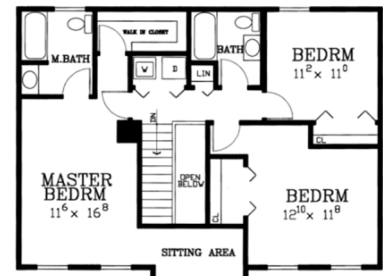
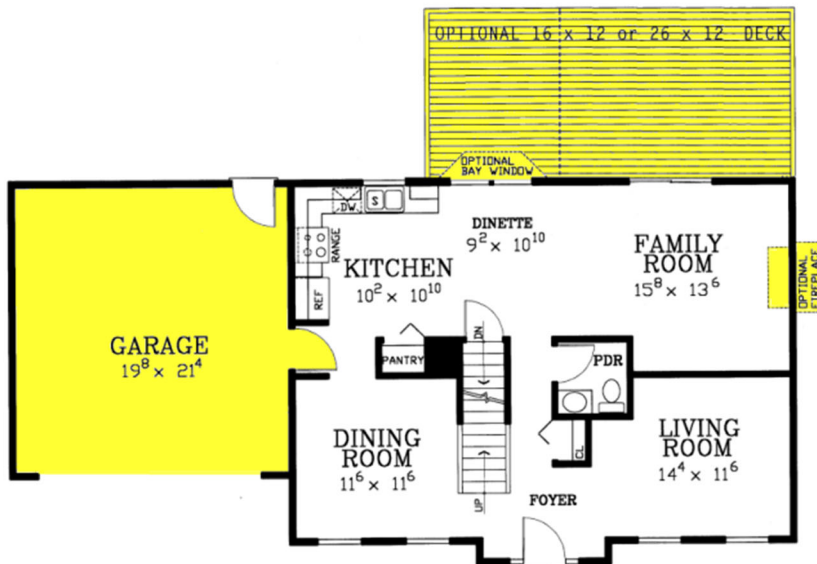
Bridgeville Enhanced Plan

### SPECIFICATIONS

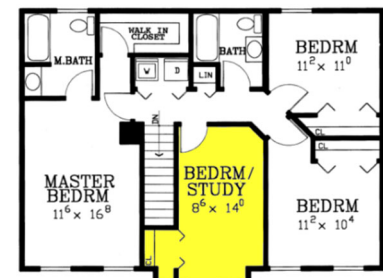
Living area:	1,900 sq.ft	Primary roof pitch:	6/12
Enhanced area:	1,912sq.ft	Garage area:	440 sq.ft.
First floor area:	900 sq.ft.	Porch area:	n/a
Upper level area:	900 sq.ft.	Deck area:	192/319 sq.ft.
Bedrooms:	3	Main ceiling height:	8'
Baths:	2 ½	Foundation:	B, C, S
House width:	36'	Walls:	2x4, 2x6
House depth:	26'		

### ENHANCEMENTS

- Two car garage (20'x22')
- Two car rear integral garage
- Rear deck with railing (16'x12' or 26'6"x12')
- Angle bay window
- 4 Bedroom option
- Fireplace



2<sup>nd</sup> Floor Value Plan



2<sup>nd</sup> Floor Enhanced Plan

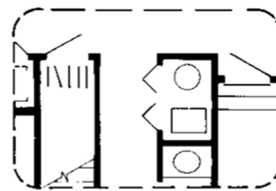
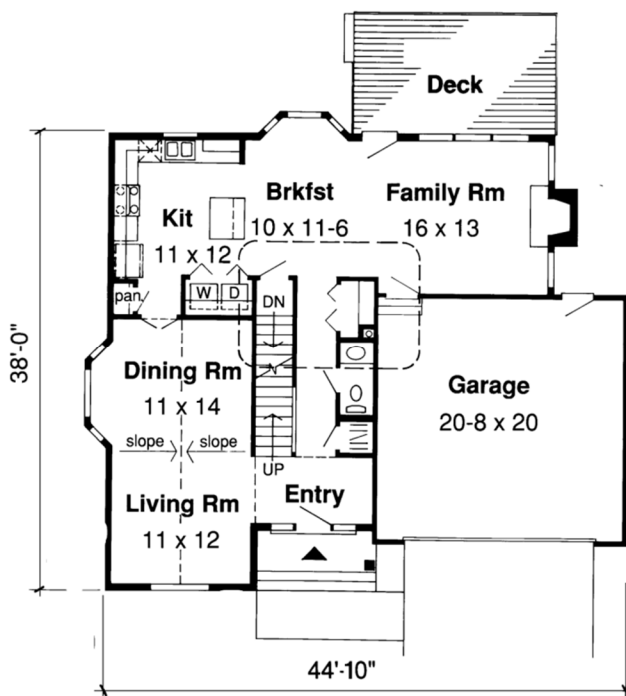


### TRADITIONAL GEM WITH LIGHT AND SPACE

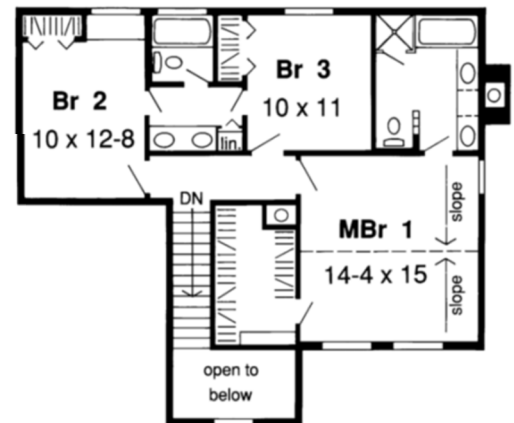
This classic exterior with plenty of curbside appeal encloses a cozy plan. The living/dining room combination is brightened by abundant windows and the family areas share a backyard view, patio access, a fireplace and an entrance to the kitchen which is equipped with a built-in pantry. This family home features a master suite complete with a room-sized walk-in closet and a private bath, two other bedrooms that share a hall bath and a two-car garage.

### SPECIFICATIONS

Total Living Area:	1,930 sq.ft.	Porch:	42 sq.ft.
Main Living Area:	1,056 sq.ft.	Deck:	202 sq.ft.
Upper Living Area:	874 sq.ft.	Formal Dining Room:	Yes
Garage area:	430 sq.ft.	Fireplace:	Yes
House Width:	44'10"	Main Ceiling Height:	8'
House Depth:	38'0"	Upper Ceiling Height:	8'
Bedrooms:	3	Foundation:	B, C, S
Baths:	2 1/2	Walls:	2x6
Max Ridge Height:	26'0"	Plan:	34851



Slab/Crawlspace Option



# 2 STORY

**SUNNYVALE** 1,960 SQ.FT.

Oaks Collection



## SPECIFICATIONS

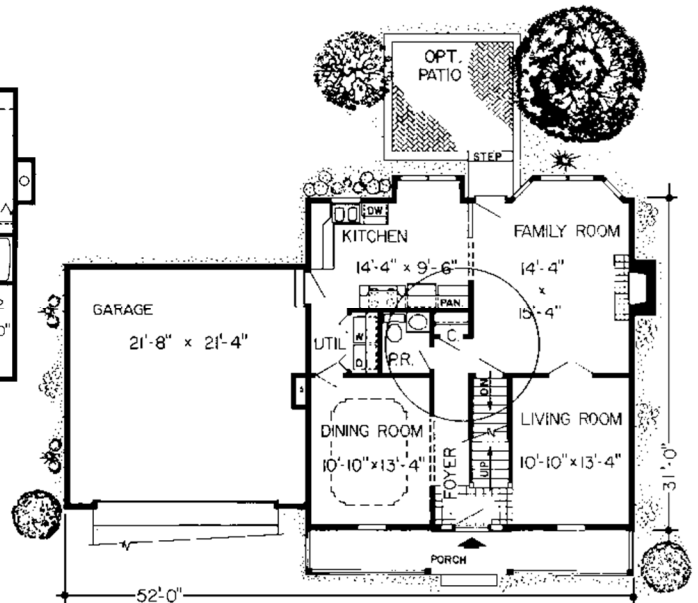
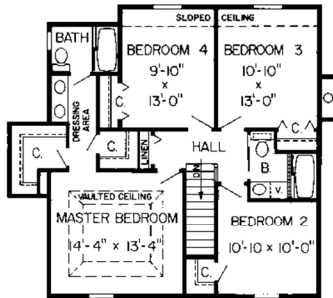
Total Living Area:	1,960 sq.ft.	Primary Roof Pitch:	7/12
Main Living Area:	955 sq.ft.	Porch:	120 sq.ft.
Upper Living Area:	1,005 sq.ft.	Formal Dining Room:	Yes
Garage area:	484 sq.ft.	Fireplace:	Yes
House Width:	52'0"	Main Ceiling Height:	8'
House Depth:	31'0"	Upper Ceiling Height:	8'
Bedrooms:	4	Foundation:	B, C, S
Full Baths:	2 1/2	Walls:	2x6
Max Ridge Height:	28'0"	Plan:	34027

## SECLUDED SLEEPING QUARTERS

This beauty accommodates the needs of a growing family and looks stunning in any neighborhood. The porch serves as a wonderful relaxing area to enjoy the outdoors. At the rear of the home is a patio, for a barbecue or for more private time away from the kids. The dining room features a decorative ceiling and has easy entry to the kitchen. The kitchen/utility area has a side exit into the garage. The living room has double doors into the family room which features a back entrance to the patio.



Sunnyvale stock plan



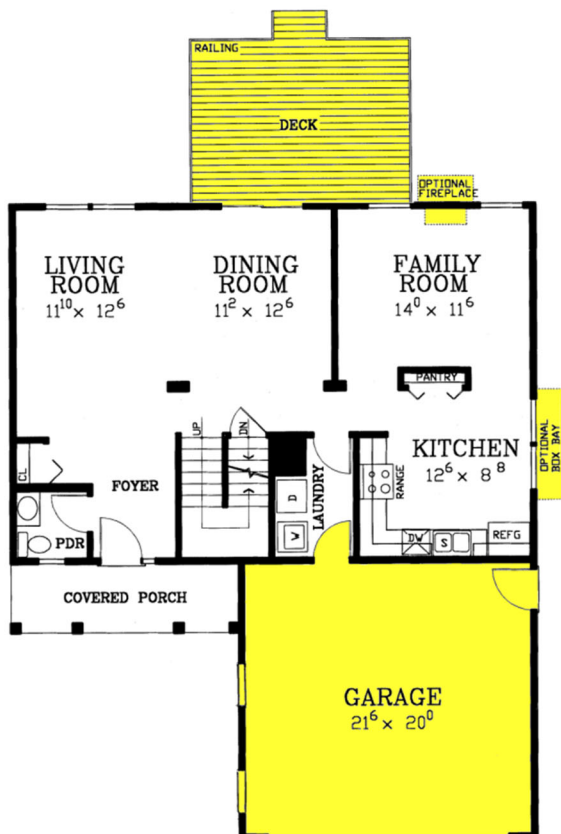
Affordable Collection



Dunkirk Enhanced Plan

### SPECIFICATIONS

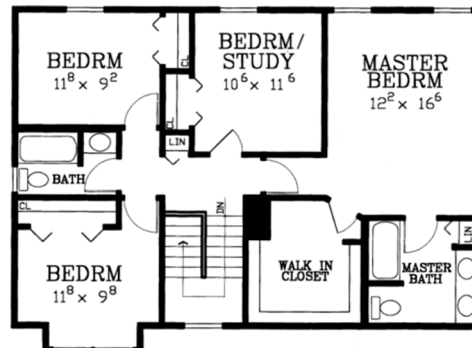
Living area:	1,992 sq.ft.	Primary roof pitch:	6/12
Enhanced area:	2,008 sq.ft.	Garage area:	440 sq.ft.
First floor area:	996 sq.ft.	Porch area:	83 sq.ft.
Upper level area:	996 sq.ft.	Deck area:	192 sq.ft.
Bedrooms:	4	Main ceiling height:	8'
Baths:	2 ½	Foundation:	B, C, S
House width:	38'	Walls:	2x4, 2x6
House depth:	26'		



### ENHANCEMENTS

- Two car garage (22'x20')
- Rear deck with railing (16'x12')
- Box bay window
- Fireplace

### STANDARD FRONT PORCH



Photos or renderings will vary from actual plan.

# 2 STORY

**ADRIAN** 2,016 SQ.FT.

*Affordable Collection*



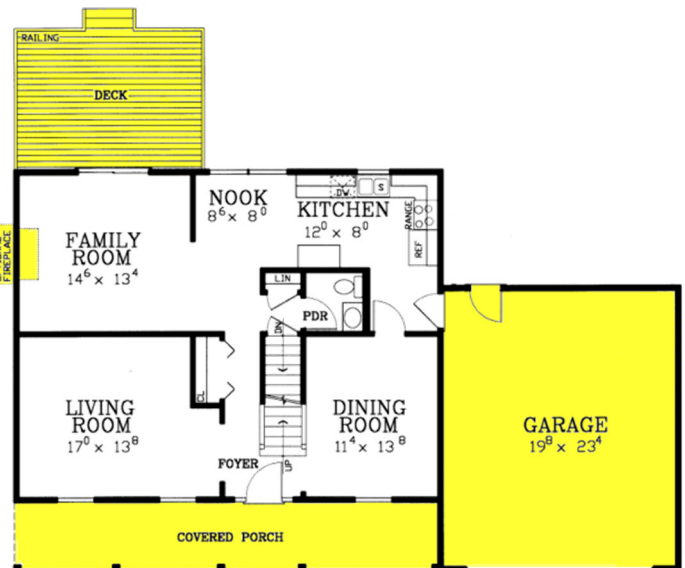
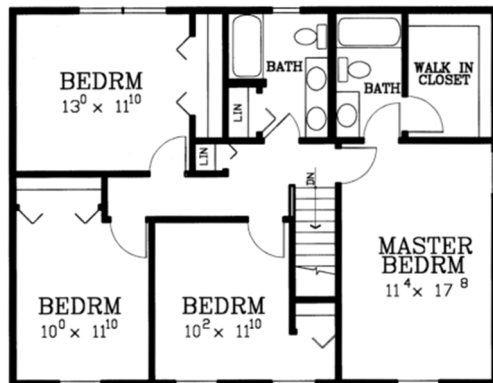
Adrian Enhanced Plan

### SPECIFICATIONS

Living area:	2,016 sq.ft.	Primary roof pitch:	6/12
Enhanced area:	2,016 sq.ft.	Garage area:	440 sq.ft.
First floor area:	1,008 sq.ft.	Porch area:	n/a
Upper level area:	1,008 sq.ft.	Deck area:	192 sq.ft.
Bedrooms:	4	Main ceiling height:	8'
Baths:	2 ½	Foundation:	B, C, S
House width:	36'	Walls:	2x4, 2x6
House depth:	28'		

### ENHANCEMENTS

- Two car garage (20'x24')
- Front porch with railing (36'x5'6")
- Rear deck with railing (16'x12')
- Fireplace



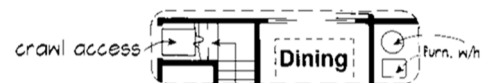
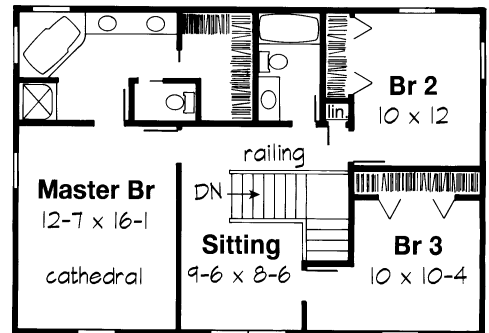
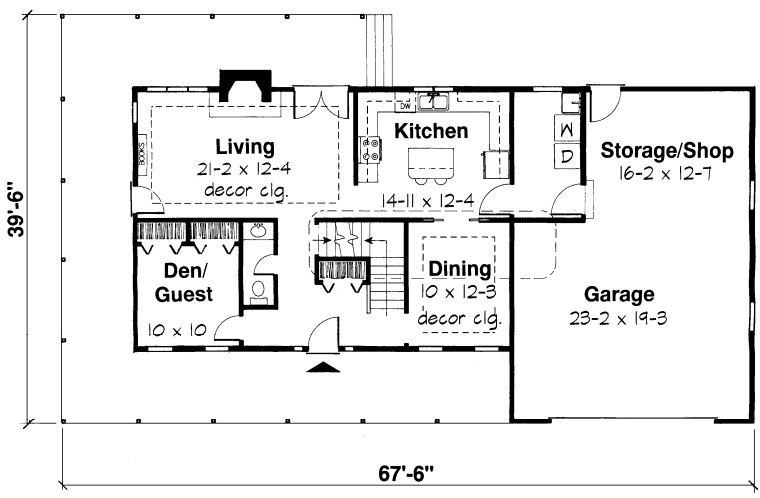


### WANT COUNTRY LIVING?

This house is wonderful to look at and live in. A wrap-around porch leads to a welcoming entry. A comfy den half bath, and dining room with ceiling treatment enjoy special fore-front status. The living room is both elegant and relaxed with fireplace and French doors to the back porch. The kitchen is surrounded with cabinetry. Its central island is always ready to serve. The upstairs master bath has cathedral ceilings, a luxurious bath with corner platform tub, walk-in closet, and an adjacent sitting room. An added bonus is the garage with workshop!

### SPECIFICATIONS

Total Living Area:	2,033 sq.ft.	Primary Roof Pitch:	8/12
Main Living Area:	1,062 sq.ft.	Porch:	700 sq.ft.
Upper Living Area:	971 sq.ft.	Formal Dining Room:	Yes
Garage area:	691 sq.ft.	Fireplace:	Yes
House Width:	68'	Main Ceiling Height:	9'
House Depth:	40'	Upper Ceiling Height:	8'
Bedrooms:	3	Foundation:	B, C, S
Baths:	2 1/2	Walls:	2x6
Max Ridge Height:	29'	Plan:	24400



# 2 STORY

**MANHATTAN** 2,083 SQ.FT.

Oaks Collection

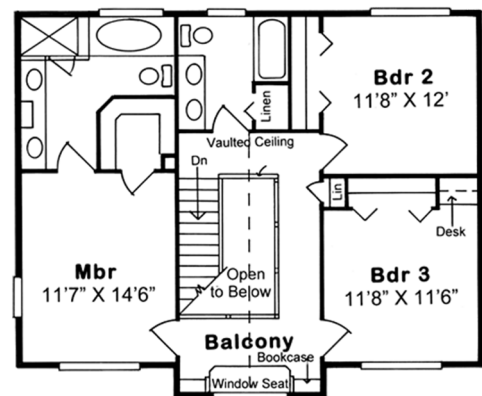
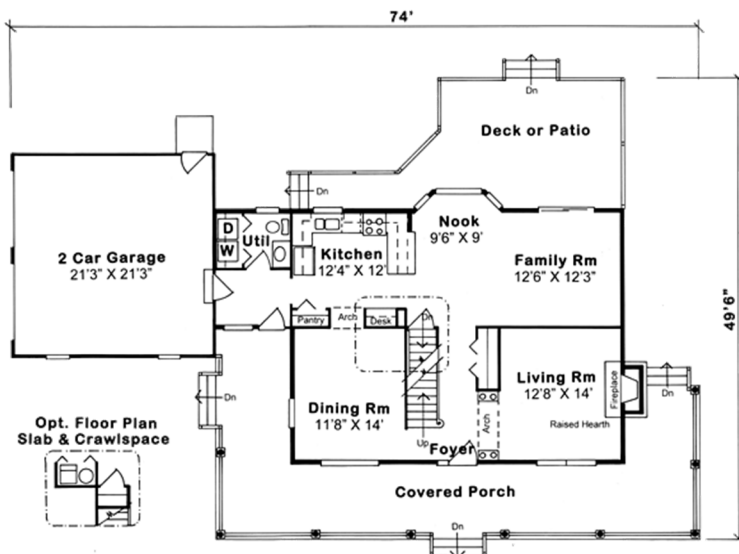


## SPECIFICATIONS

Total Living Area:	2,083 sq.ft.	Porch:	581 sq.ft.
Main Living Area:	1,113 sq.ft.	Deck:	566 sq.ft.
Upper Living Area:	970 sq.ft.	Formal Dining Room:	Yes
Garage area:	480 sq.ft.	Fireplace:	Yes
House Width:	74'	Main Ceiling Height:	8'
House Depth:	41'6"	Upper Ceiling Height:	8'
Bedrooms:	3	Foundation:	B, C, S
Baths:	2 1/2	Walls:	2x6
Max Ridge Height:	27'	Plan:	24245

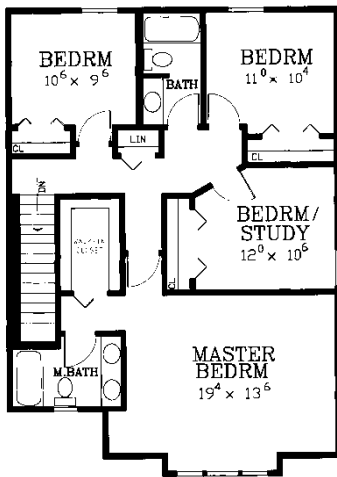
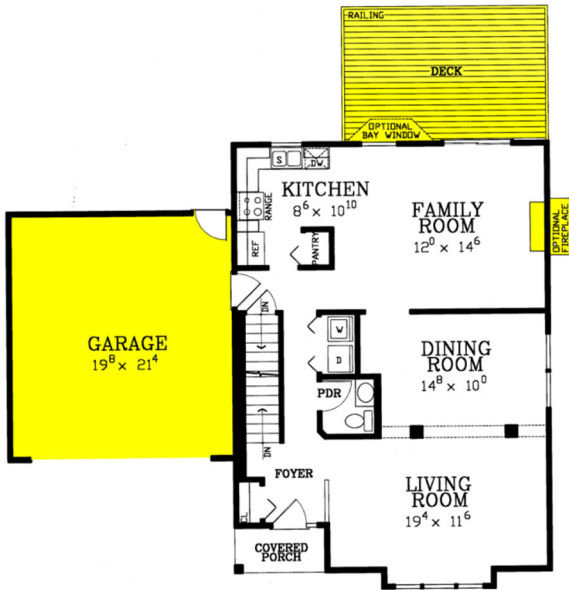
## COMFORTABLE COUNTRY LIVING

For those seeking the comfort of Country architecture, this home is for you. A deep, covered wrapping porch provides plenty of protected space to enjoy the outdoors, rain or shine. Inside, the living room and dining room offer plenty of room for formal entertaining. To the rear a large family room enjoys sunny views to the backyard and shares open space with the kitchen and breakfast area. All bedrooms are located on the second level.



Affordable Collection

## LOUISVILLE 2,094 – 2,110 SQ.FT.

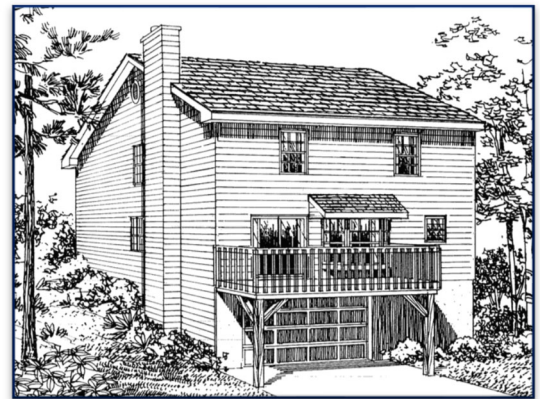


### SPECIFICATIONS

Living area:	2,094 sq.ft.
Enhanced area:	2,110 sq.ft.
First floor area:	1,047 sq.ft.
2nd floor area:	1,047 sq.ft.
Bedrooms:	4
Baths:	2 1/2
House width:	28'
House depth:	38'
Primary roof pitch:	6/12
Garage area:	440 sq.ft.
Porch area:	Yes
Deck area:	192 sq.ft.
Main ceiling height:	8'
Foundation:	B, C, S
Walls:	2x4, 2x6

### ENHANCEMENTS

- Two car garage (20'x22')
- Front or rear integral garage
- Rear deck with railing (13'6" x 10')
- Angle bay window
- Fireplace



Louisville Enhanced Rear Integral Garage



Louisville Enhanced Front Integral Garage

Photos or renderings will vary from actual plan.

# 2 STORY

**ASHTON** 2,143 SQ.FT.

Oaks Collection

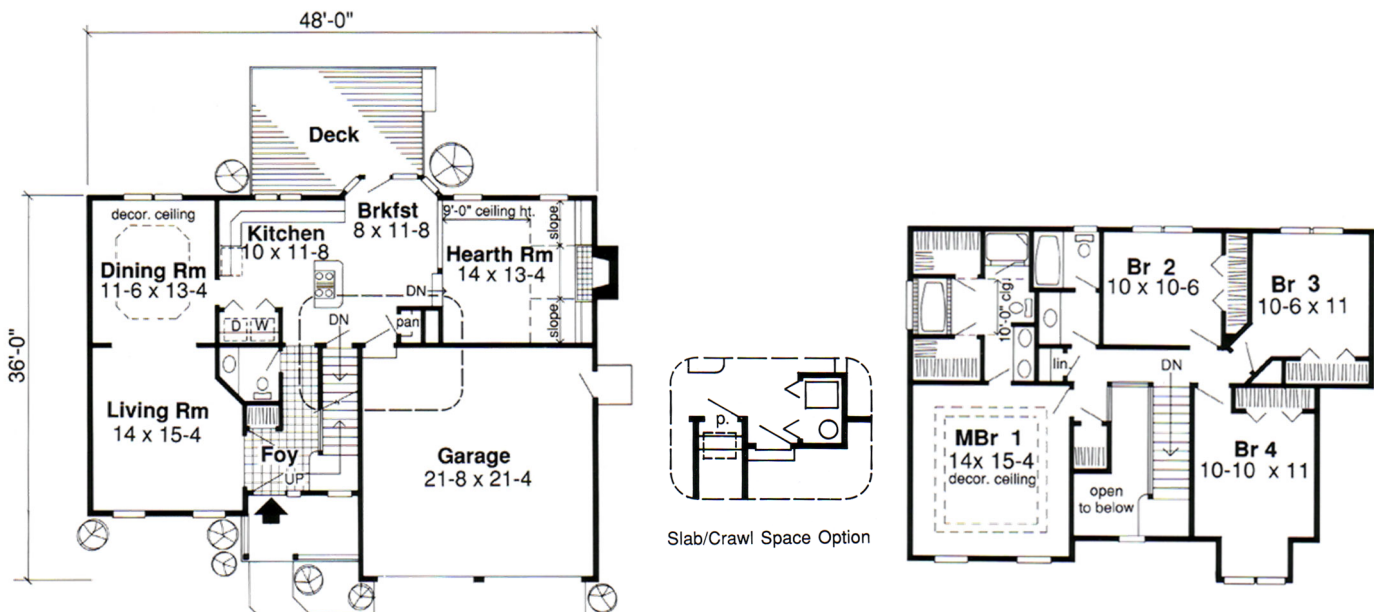


### SPECIFICATIONS

Total Living Area:	2,154 sq.ft.	Primary Roof Pitch:	6/12
Main Living Area:	1,087 sq.ft.	Porch:	77 sq.ft.
Upper Living Area:	1,067 sq.ft.	Deck:	178 sq.ft.
Garage area:	1,062 sq.ft.	Formal Dining Room:	Yes
House Width:	50'	Fireplace:	Yes
House Depth:	38'	Main Ceiling Height:	8'
Bedrooms:	4	Upper Ceiling Height:	8'
Baths:	2 1/2	Foundation:	B, C, S
Max Ridge Height:	27'0	Walls:	2x6
		Plan:	20179

### CLASSIC STYLING WITH SUNKEN HEARTH ROOM

The classic clapboard exterior of this home, graced with artful detailing, brings back memories of long ago. But its wide-open interior spaces takes it right into the future. A staircase to the four upper-level bedrooms dominates the central foyer. Back on the main floor, you'll find a huge living room that flows into the formal dining room in an open arrangement. A hallway past the powder room leads to family areas overlooking the rear deck.



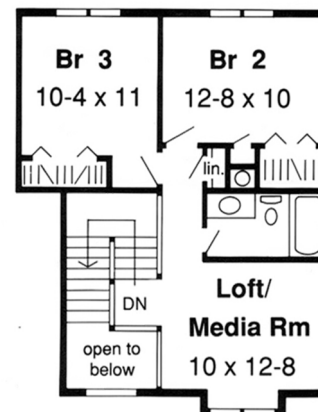
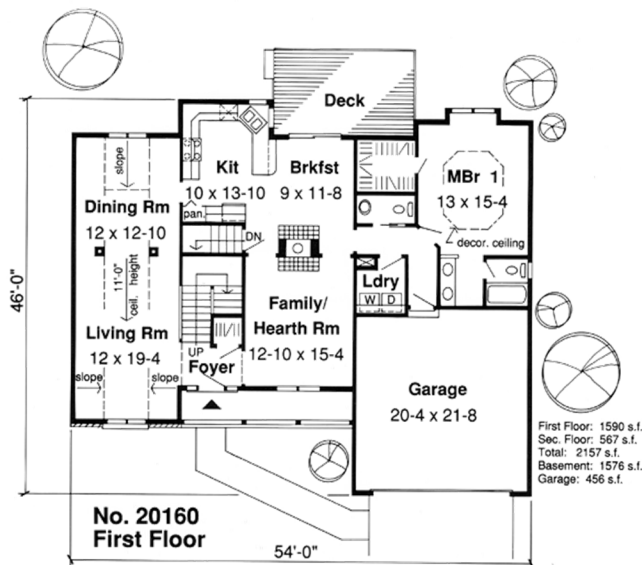


### SPECIFICATIONS

Total Living Area:	2157 sq.ft.	Primary Roof Pitch:	7/12
Main Living Area:	1590 sq.ft.	Porch:	80 sq.ft.
Upper Living Area:	567 sq.ft.	Deck:	166 sq.ft.
Garage area:	438 sq.ft.	Fireplace:	Yes
House Width:	54'	Main Ceiling Height:	8'
House Depth:	46'	Upper Ceiling Height:	8'
Bedrooms:	3	Foundation:	B, C, S
Baths:	2 1/2	Walls:	2x6
Max Ridge Height:	28'	Plan:	20160

### STREETSIDE APPEAL

This three bedroom beauty is loaded with convenience and charm. A traditional covered porch shelters entering guests. Lead them into the formal elegance of the living and dining room combination, divided by columns for a spacious feeling and a front-to-back view. A two-way fireplace in the family room creates a warm, comfortable atmosphere. The kitchen and breakfast room adjoin in an open arrangement overlooking the rear deck. The master suite, tucked behind the garage in a quiet corner of the house, shares the backyard view.



# 2 STORY

## HAMPTON 2,242 SQ.FT.

Oaks Collection

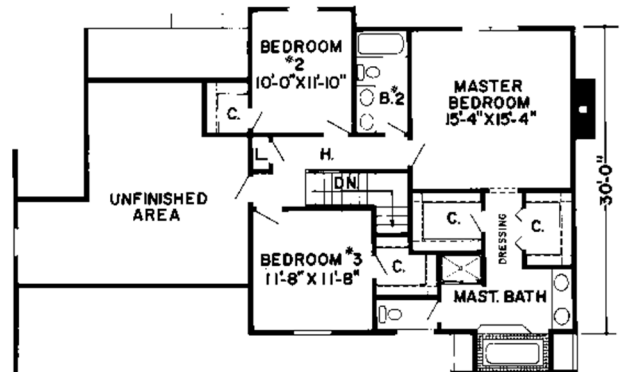
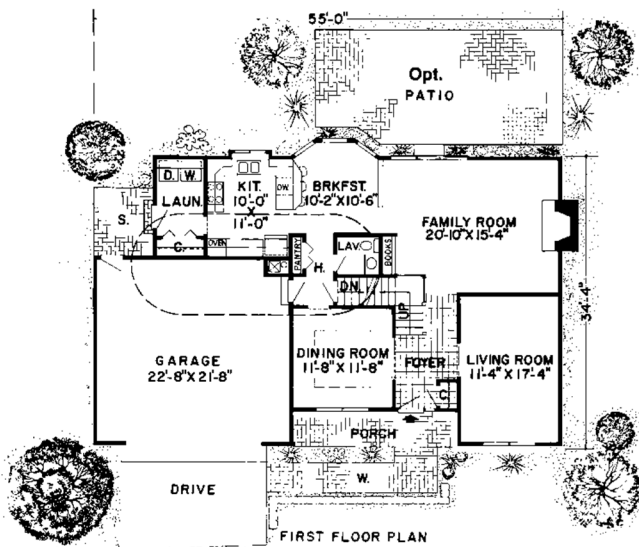


### SPECIFICATIONS

Total Living Area:	2,280 sq.ft.	Primary Roof Pitch:	8/12
Main Living Area:	1,240 sq.ft.	Porch:	77 sq.ft.
Upper Living Area:	1,040 sq.ft.	Formal Dining Room:	Yes
Garage area:	503 sq.ft.	Fireplace:	Yes
House Width:	57'	Main Ceiling Height:	8'
House Depth:	36'	Upper Ceiling Height:	8'
Bedrooms:	3	Foundation:	B, C, S
Full Baths:	2 1/2	Walls:	2x6
Max Ridge Height:	29'0	Plan:	34827

### ROOM TO GROW

A charming porch shades the windows of the dining room, which rests alongside the tiled foyer. The cozy living room offers space for private times, while the larger family room enjoys its own fireplace and access to the optional patio. A bayed window sheds light on a breakfast nook with a built-in bar connecting to the kitchen. On the second floor, twin walk-in closets connect the master bedroom to a well-appointed full bath. Two secondary bedrooms and large unfinished area round out the upper level.



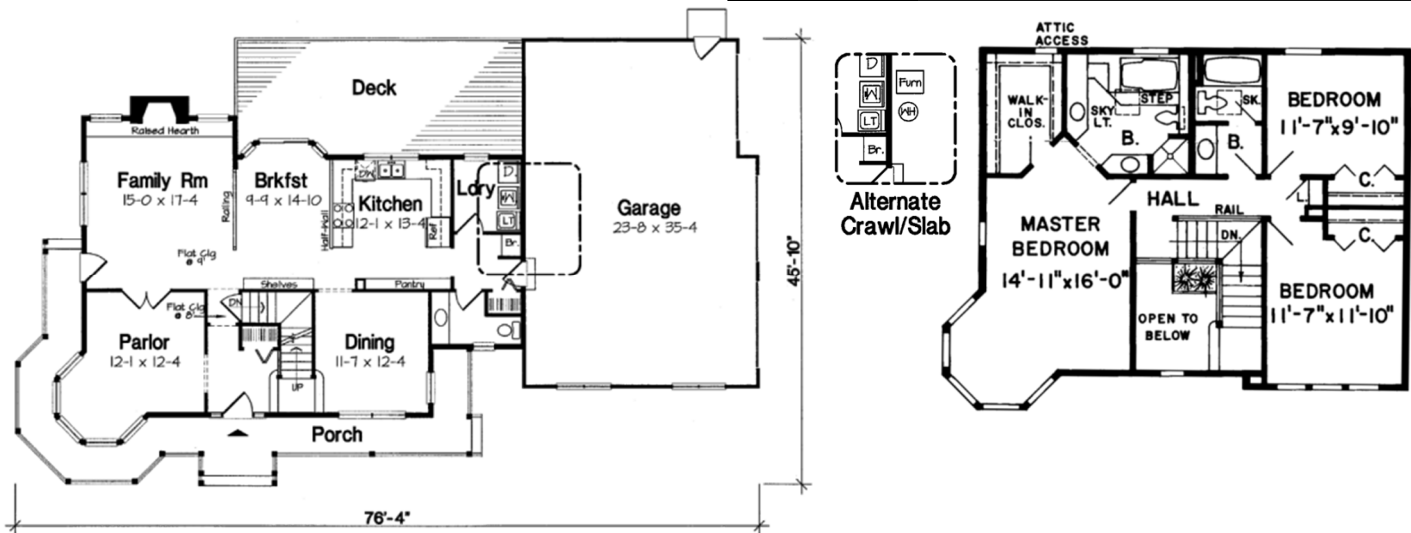


### VICTORIAN DETAIL WITH COUNTRY CHARM

A wraparound porch and rear deck add extra living space to the roomy first floor, which features a formal parlor and dining room just off the central entry. Informal areas at the rear of the house are wide open for family interaction. Gather the crew around the fireplace in the family room, or make supper in the kitchen while you supervise the kids' doing schoolwork in the sun-washed breakfast room. Three bedrooms, tucked upstairs in a quiet atmosphere, feature skylit baths, and you'll love the five-sided sitting nook in the master suite, a perfect spot to relax after a luxurious bath in the sunken tub.

### SPECIFICATIONS

Total Living Area:	2,281 sq.ft.	Porch:	315 sq.ft.
Main Living Area:	1,260 sq.ft.	Deck:	271 sq.ft.
Upper Living Area:	1,021 sq.ft.	Formal Dining Room:	Yes
Garage area:	851 sq.ft.	Fireplace:	Yes
House Width:	76'4	2nd Floor Laundry:	Yes
House Depth:	45'10	Main Ceiling Height:	9'
Bedrooms:	3	Upper Ceiling Height:	8'
Baths:	2 1/2	Vaulted Ceiling:	Yes
Max Ridge Height:	29'6	Foundations:	B, C, S
Primary Roof Pitch:	10/12	Walls:	2x6
		Plan:	10690



Photos or renderings will vary from actual plan.

# 2 STORY

**STRATFORD** 2,293 SQ.FT.

Oaks Collection

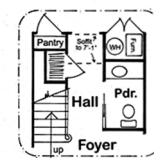
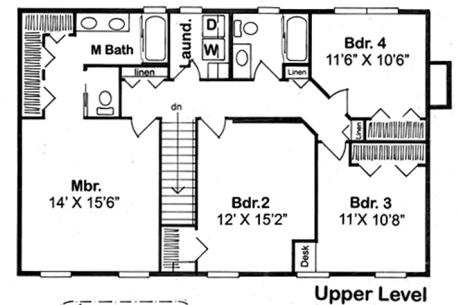
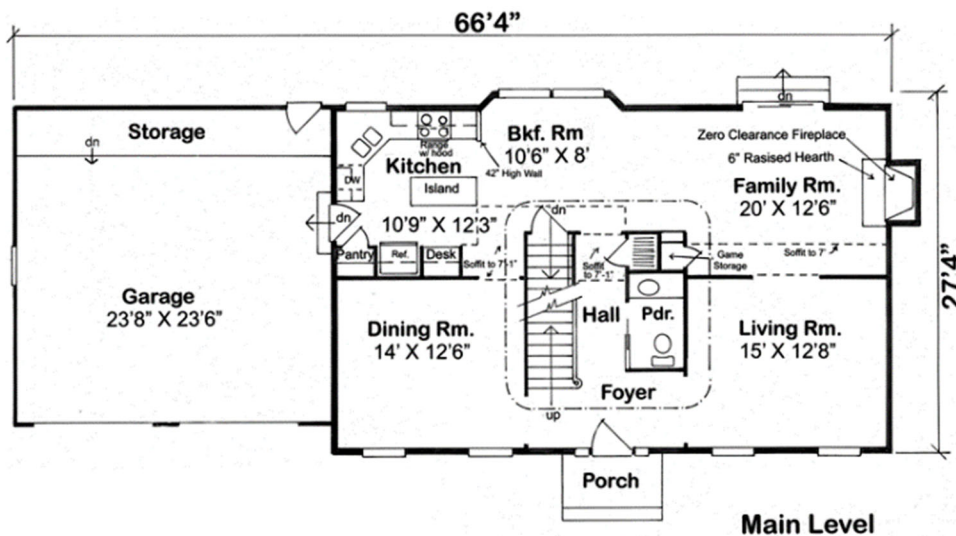


## SPECIFICATIONS

Total Living Area:	2,293 sq.ft.	Primary Roof Pitch:	8/12
Main Living Area:	1,136 sq.ft.	Formal Dining Room:	Yes
Upper Living Area:	1,157 sq.ft.	Porch:	30 sq.ft.
Garage area:	580 sq.ft.	Fireplace:	Yes
House Width:	66'	Main Ceiling Height:	8'
House Depth:	27'	Upper Ceiling Height:	8'
Bedrooms:	4	Foundations:	B, C, S
Baths:	2 1/2	Walls:	2x6
Max Ridge Height:	27'	Plan:	34705

## REFINED ELEGANCE

This Colonial style 4-bedroom, two-story design keeps active and quiet areas separate. The formal living and dining rooms flank a spacious central entry while the family areas flow together into an open space at the rear of the house. An island kitchen, which features a built-in pantry, is centrally located for easy service to both the dining room and the breakfast nook. Upstairs, the laundry is conveniently located adjacent to the bedrooms. Three bedrooms share a hall bath and the master suite includes large closets and double vanities in the bath.



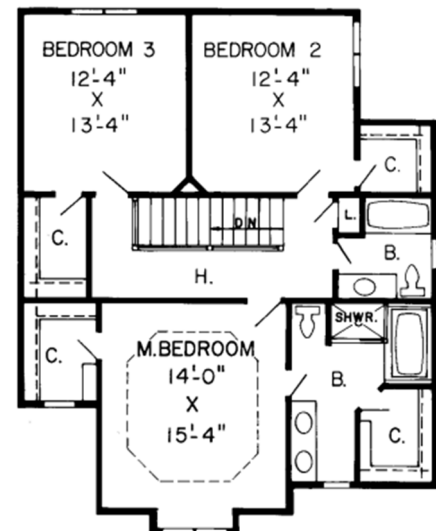
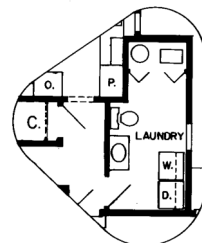
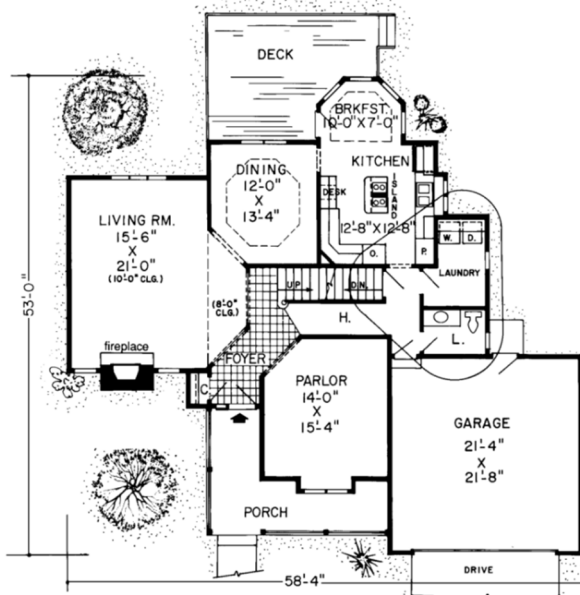


### COMPACT AND ELEGANT

You'll never get bored with the rooms in this charming, three-bedroom Victorian. The angular gives every room an interesting shape. From the wrap-around veranda, the entry foyer leads through the living room and parlor, breaking them up without confining them, and giving each room an airy atmosphere. In the dining room, with its hexagonal recessed ceiling, you can enjoy your after-dinner coffee and watch the kids playing on the deck. Or eat in the sunny breakfast room off the island kitchen, where every wall has a window, and every window has a different view. You'll love the master suite's bump-out windows, walk-in closets, and double sinks.

### SPECIFICATIONS

Total Living Area:	2,525 sq.ft.	Primary Roof Pitch:	8/12
Main Living Area:	1,409 sq.ft.	Porch:	153 sq.ft.
Upper Living Area:	1,116 sq.ft.	Formal Dining Room:	Yes
Garage area:	483 sq.ft.	Fireplace:	Yes
House Width:	58'4"	Main Ceiling Height:	8'
House Depth:	53'0"	Upper Ceiling Height:	8'
Bedrooms:	3	Foundations:	B, C, S
Baths:	2 1/2	Walls:	2x6
Max Ridge Height:	31'0"	Plan:	34926



# 2 STORY

**WOODLANDS** 2,545 SQ.FT.

Oaks Collection

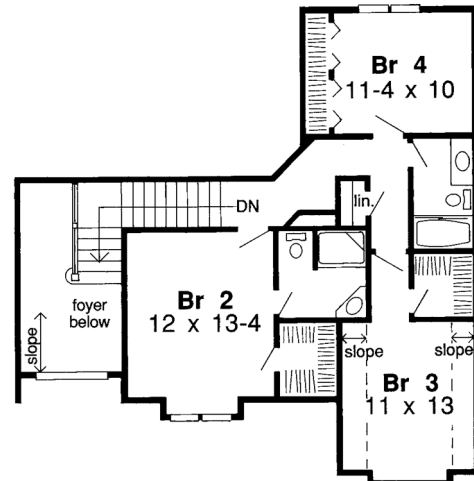
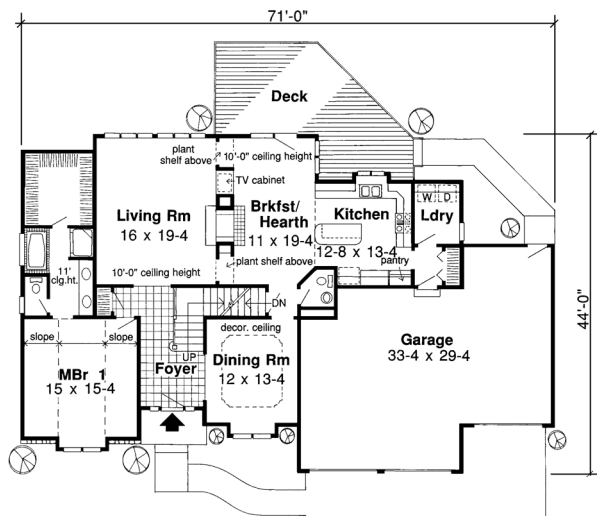


## SPECIFICATIONS

Total Living Area:	2,545 sq.ft.	Porch:	43 sq.ft.
Main Living Area:	1,760 sq.ft.	Deck:	300 sq.ft.
Upper Living Area:	785	Formal Dining Room:	Yes
Garage area:	797 sq.ft.	Fireplace:	Yes
Garage Bays:	3	1st Floor Master:	Yes
House Width:	71'0"	Main Ceiling Height:	9'
House Depth:	44'0"	Upper Ceiling Height:	8'
Bedrooms:	4	Foundations:	B, C, S
Full Baths:	3 1/2	Walls:	2x6
Max Ridge Height:	30'0"	Plan:	20199
Primary Roof Pitch:	7/12		

## STONE, STUCCO, AND ABUNDANT SPACE

The mixture of stone and stucco gives this elegant home a cozy feel. The spacious foyer leads into a living room, which has a 10-foot ceiling and plant shelf. The breakfast/hearth area is directly off the living room and leads into a spacious kitchen. A powder room sits between the kitchen and the formal dining room. The main-level master suite has a sloped ceiling and huge walk-in closet. The upper level has three more bedrooms, one of which has its own bath.



Affordable Collection

## WESTMINSTER 2,576 – 2,588 SQ.FT.

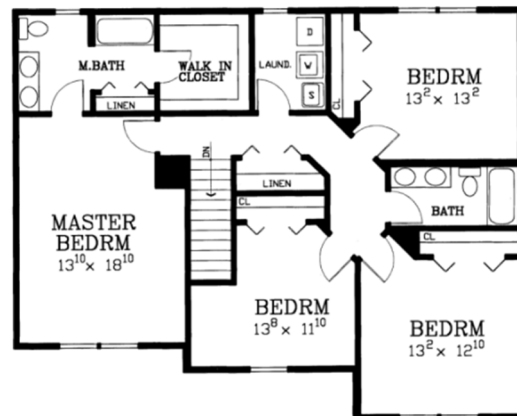
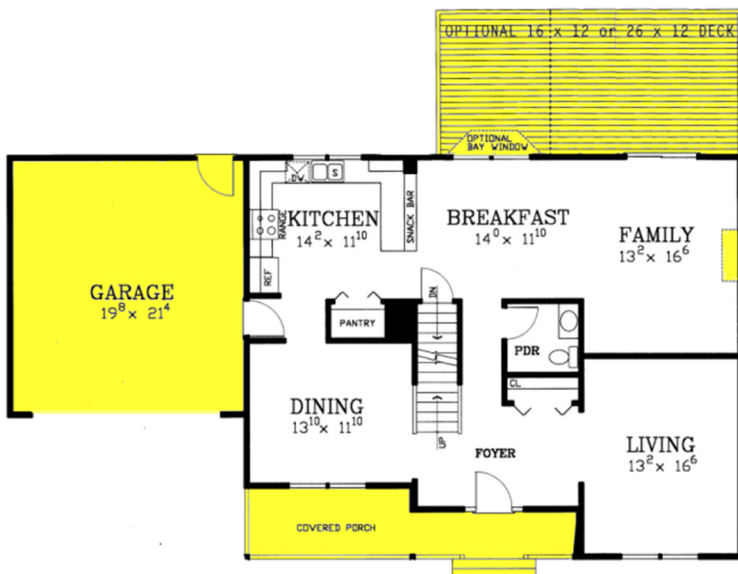


### ENHANCEMENTS

- Two car garage (22'x20')
- Two car rear integral garage
- Rear deck with railing (26'x12' or 16'x12')
- Angle bay window
- Front porch with railing
- Fireplace

### SPECIFICATIONS

Living area:	2,576 sq.ft.	Primary roof pitch:	6/12
Enhanced area:	2,588 sq.ft.	Garage area:	440 sq.ft.
First floor area:	1,288 sq.ft.	Porch area:	168 sq.ft.
Upper level area:	1,288 sq.ft.	Deck area:	192 or 312sq.ft.
Bedrooms:	4	Main ceiling height:	8'
Baths:	2 ½	Foundation:	B, C, S
House width:	42'	Walls:	2x4, 2x6
House depth:	34'		

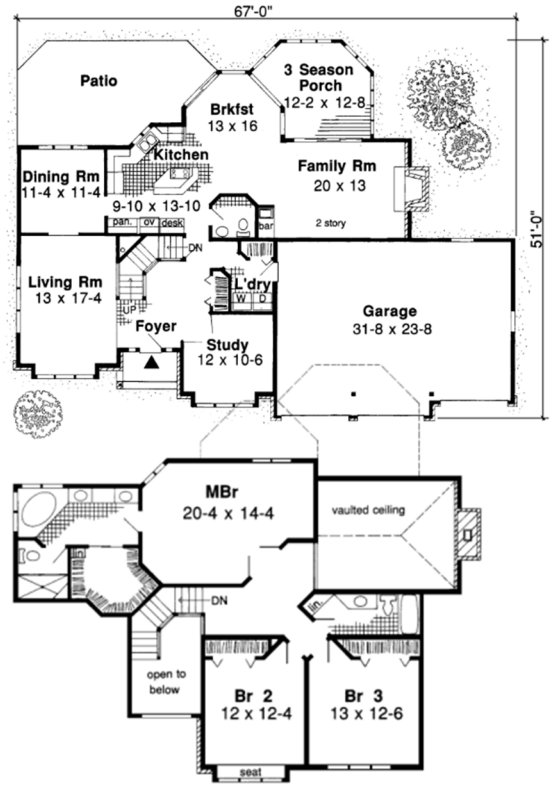


Photos or renderings will vary from actual plan.

# 2 STORY

## HIGHTOWER 2,674 SQ.FT.

Oaks Collection

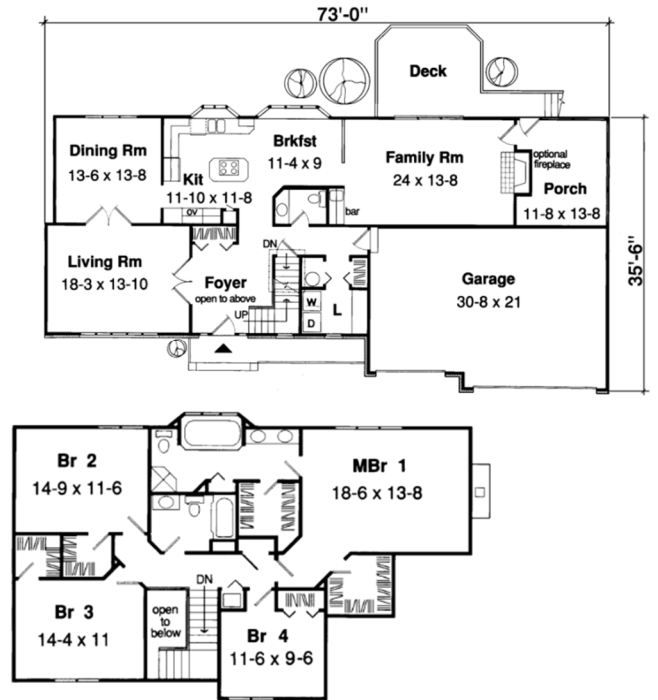


### SPECIFICATIONS

Total Living Area:	2,674 sq.ft.	Porch:	41 sq.ft.
Main Living Area:	1,511 sq.ft.	Formal Dining Room:	Yes
Upper Living Area:	1,163 sq.ft.	Fireplace:	Yes
Garage area:	765 sq.ft.	Main Ceiling Height:	8'
House Width:	67'0	Upper Ceiling Height:	8'
House Depth:	51'0	Vaulted Ceiling:	Yes
Bedrooms:	3	Foundations:	B, C, S
Full Baths:	2 1/2	Walls:	2x6
Max Ridge Height:	33'0	Plan:	34047
Primary Roof Pitch:	10/12		

## BRADFORD 2,710 SQ.FT.

Oaks Collection



### SPECIFICATIONS

Total Living Area:	2,710 sq.ft.	Porch:	108 sq.ft.
Main Living Area:	1,469 sq.ft.	Deck:	217 sq.ft.
Upper Living Area:	1,241 sq.ft.	Formal Dining Room:	Yes
Garage area:	620 sq.ft.	Fireplace:	Yes
House Width:	73'0	Main Ceiling Height:	8'
House Depth:	35'6	Upper Ceiling Height:	8'
Bedrooms:	4	Foundations:	B, C, S
Baths:	2 1/2	Walls:	2x6
Max Ridge Height:	36'0	Plan:	34073
Primary Roof Pitch:	12/12		

## BEFORE YOU PLACE YOUR BLUEPRINT ORDER PLEASE READ THE FOLLOWING:

### HOW TO ORDER:

You can order your blueprints through your local 84 Lumber store. Your blueprint orders will be shipped to the 84 Lumber store closest to you, and our building professionals will help you with your building material selection. If you do not know of the nearest store location, please feel free to call us for assistance at 1-800-359-8484.

Please make sure you specify your foundation type with your order (Basement, Crawl, Slab) along with your preferred wall thickness (2"x 4" or 2" x 6"). Oaks Collection homes are available as 2"x6" only.

Your stock blueprint order will usually ship the same day if received by 10 AM, Eastern Time. You also have the option for second day or overnight delivery.

### ABOUT YOUR BLUEPRINT SET:

There are six plans in a set. This allows you to have enough sets for you and your building professionals. If more sets are needed for subcontractors, building inspectors or banking officials, a maximum of four additional sets are available for \$50 per set. These extra sets may be ordered at any time within 90 days of your initial purchase. Single set orders are not available.

PDF files may be available for some plans. Call for a price. Blueprint production is not included in the price quoted.

True-reverse plans can be ordered for a small additional fee. This reverses the house, left to right, and your blueprints will show correct lettering and dimensions.

Plans do not include electrical, plumbing or HVAC drawings.

### CODE COMPLIANCE:

The home plans included in this catalog are designed to meet or exceed the requirements of nationally recognized model building codes in effect at the time the plan was drawn. Typically plans are designed to comply with common building practices. If your plans do not meet your local zoning requirements you may need to hire a local structural engineer to review and upgrade the plans. These plans are not engineered for high wind load or seismic conditions.

### ENGINEERING & RESCHECKS:

Engineer seals may be available for your plan for an additional fee. Please talk to your local building officials to determine if this service is needed. Since the architect or engineer will need to take some time to review the plans to be sealed, these orders will take ten days to two weeks to arrive at your local store.

### EXCHANGES:

Blueprints may be exchanged for another selection from this catalog within 90 days. An exchange fee will apply. No refunds. Sealed plans may not be exchanged.

Note: All renderings and floor plans in this catalog are for illustrative purposes only and are not part of a legal contract. Floor plans and standard features are subject to change without notice. Dimensions and square footage notations may vary from those in the final blueprints. Optional items indicated are not part of the quoted base house package price and are available at an additional cost. The homes in this catalog are not available in Florida or California. Prices subject to change without notice. Blueprint fees are non-refundable.



**WANT TO SEE MORE DETAILS ON OUR HOMES?  
CHECK OUT 84LUMBER.COM.**

- Print feature sheets for each home
- See virtual kitchen layouts
- View ballpark price lists
- Download this catalog
- See lots of additional packages

**READY FOR AN ESTIMATE?  
STOP AT YOUR LOCAL 84 LUMBER STORE.**

Your materials selection is as important as your blueprint selection. 84 Lumber supplies name-brand products from leading manufacturers. Let our professionals assist with your materials selection to make sure your finished

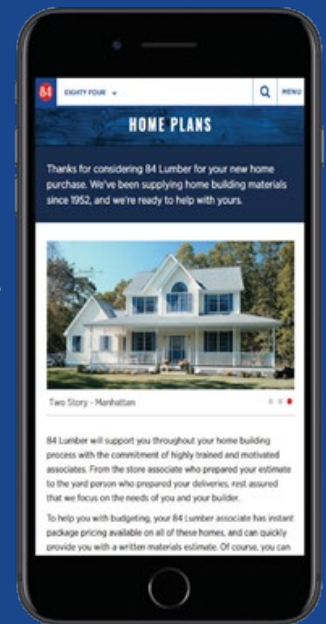
**WHAT'S INCLUDED IN YOUR HOME PACKAGE?**

**In general, 84 will supply the following products...**

- Treated sill plates
- Floor joists
- 3/4" plywood or OSB floor
- Wall studs
- OSB wall sheathing
- Trusses or rafters per plan
- OSB roof sheathing
- Roofing felt
- Fiberglass roofing shingles
- Roof ventilation
- Gutters and downspouts
- Insulated windows
- Exterior trim
- Vinyl siding (most Affordables)
- Hardboard siding (most Oaks)
- Insulated exterior doors
- Colonist interior doors
- Fiberglass wall insulation
- Fiberglass ceiling insulation
- Drywall and finishing materials
- Interior trim
- Fasteners and adhesives
- Kitchen cabinets & countertops
- Vanities & tops

**Here are some items we don't supply...**

- Foundation
- Steel beams or columns
- Brick
- Stone
- Stucco
- Plumbing
- HVAC
- Electric
- Finish flooring
- Tubs & showers
- Paint & finishes



**1-800-359-8484 84LUMBER.COM**

© 84 Lumber Co. | YDTL #K-1402 021026