



84 LUMBER PROJECT IDEA CATALOG

STORAGE SOLUTIONS

FROM YARD TOOLS TO AUTOMOBILES, WE'VE GOT YOU COVERED

BACKYARD LIVING

CREATE THE OUTDOOR SPACE OF YOUR DREAMS

KITCHEN & BATH

CUSTOMIZE YOUR INDOOR SPACE WITH OUR HELP



84LUMBER.COM



GAMBREL BARN

These oversized barns maximize your storage space. They're easy to build, using our engineered truss brackets, and provide a solid structure with lots of overhead space.

GAMBREL BARN FEATURES

- Pressure treated floor joists
- Framing lumber
- Engineered truss brackets
- 5/8 CDX floor
- 4'x8' grooved siding
- 7/16" OSB roof sheathing
- Drip edge
- Fiberglass roofing shingles
- 1"x4" trim on front face
- Hardware & fasteners
- Plans & instructions

8'X8' (830-64-99)
8'X10' (830-65-99)
8'X12' (830-66-99)

- 9' 0" interior height
- Big 4'x7' double door



- Eco-friendly composite material
- Wood-textured surface
- Easy to install
- Resists termites and fungal decay
- Primed and ready to paint
- 8" o.c. groove spacing

GAMBREL BARNs



10'X12' (830-67-99)
10'X16' (830-68-99)

- 10' 8" interior height
- Big 6'x8' double door



12'X12' (830-69-99)
12'X16' (830-70-99)

- 11' 6" interior height
- Big 6'x8' double door
- Optional 8'x7' garage door

OPTIONAL UPGRADES

- Treated skids
- Shelving
- Lofts
- Windows
- Ridge vent
- Roofing felt
- 1"x4" trim on rear face



These barns are HUGE! Add a loft for even more storage.



Engineered truss brackets simplify construction. No miter cuts!

GABLE SHEDS

Contemporary, simple design gives you an affordable package that's easy to build.

GABLE & EAVE SHED FEATURES

- Pressure treated floor framing
- Framing lumber for walls & roof
- 5/8" CDX floor
- 6' high walls (8' wide sheds)
- 7' high side walls (10', 12' wide, and all eave entry sheds)
- 4'x8' grooved siding
- 4/12 roof pitch (8' wide sheds)
- 6/12 roof pitch (10', 12' wide, and all eave entry sheds)
- 7/16" roof sheathing
- Drip edge
- Fiberglass roofing shingles
- 1x4 trim on front face
- Hardware & fasteners
- Plans & instructions



8'X8' (837-07-99)
8'X10' (837-01-99)
8'X12' (837-02-99)

- 4'x6' double door

OPTIONAL UPGRADES	• Treated skids	• Windows	• 1"x4" trim on rear face
	• Shelving	• Ridge vent	
	• Loft	• Roofing felt	



10'X12' (837-08-99)
10'X16' (837-03-99)

- 4'x6' double door



12'X12' (837-04-99)
12'X16' (837-09-99)

- 5'x6' double door

NEW! Abundant light & ventilation on all sides.

EAVE SHEDS

**POOL HOUSE /
HOT TUB SHED**

PACKAGE FEATURES

- 4"x4" treated skids
- 2"x6" treated floor joists
- 2"x6" treated decking
- 2"x4" wall framing
- 4"x8" grooved siding
- 2"x4" roof framing
- 7/16" roof sheathing
- Drip edge
- Fiberglass roofing shingles
- 1x4 trim
- Vinyl sliding patio door
- Vinyl sliding windows
- Hardware & fasteners
- Detailed plans & instructions

8'X12' (838-58-99)
with 10'x14' floor

10'X12' (838-68-99)
with 12'x14' floor



8'X8' (837-45-99)

- 4'x6' double door



8'X10' (837-26-99)
8'X12' (837-10-99)
10'X12' (837-36-99)
12'X12' (837-38-99)

- 4'x6' double door and one window



10'X16' (837-37-99)
12'X16' (837-39-99)

- 4'x6' double door and two windows



TREATED DECKS

A traditional favorite, these deck packages are solid, easy to build, and provide lasting value.

DECK PACKAGE FEATURES

- 6"x6" posts
- 2"x8" double beams
- 2"x8" joists, 16" o.c.
- 5/4"x6" decking
- Galvanized nails & hardware
- Lag screws & washers
- Stairs and railing
- Complete plans including instructions



STANDARD SIZES

8'X6'	10'X6'	12'X8'	14'X8'	16'X8'
8'X8'	10'X8'	12'X10'	14'X10'	16'X10'
	10'X10'	12'X12'	14'X12'	16'X12'

FREE deck custom design estimating service available. Ask for your free design planner.

BACKYARD LIVING

WOOD PERGOLAS

Add character and shade to your patio or deck. The oversized posts and beams are sure to add an upscale touch to your landscape.

PERGOLA PACKAGE FEATURES

- 6"x6" treated posts
- 2"x10" treated beams
- 2"x8" treated rafters
- 2"x2" treated louvers
- Concrete mix
- Hardware
- Nails
- Plans

10'X10'	(828-00-99)
10'X12'	(828-01-99)
10'X16'	(828-02-99)
12'X12'	(828-03-99)
12'X16'	(828-04-99)

PLAYSET PACKAGES

LEGACY

(444-60-99)



CONTENDER

(444-64-99)



TRAINER

(444-68-99)



More playset packages available!
Packages include lumber, hardware, fasteners, easy to follow plans.

GAZEBOS



MAJESTIC OVAL

8'X12' (838-35-99) **10'X16'** (838-56-99)
8'X16' (838-39-99) **10'X20'** (838-57-99)



HOT TUB

8'X8' (838-04-99)



OCTAGON

8'X8' (838-09-99)
10'X10' (838-10-99)
12'X12' (838-11-99)



SIMPLY FANCY

8'X8' (838-27-99)
10'X10' (838-28-99)
12'X12' (838-34-99)

**GAZEBO
 PACKAGES
 INCLUDE**

- Blueprints
- Concrete mix
- Floor framing
- Floor deck
- Roofing felt, sheathing & shingles
- Drip edge
- Trim
- Railing
- Hardware & nails

Artist renderings & photos. Actual packages and options vary.

TINY LIVING

One of these charming homes is sure to create your perfect getaway .
With upscale amenities they're as good looking as they are practical.
See more details in our free 84 Homes catalog.



SALMON CREEK 448 SQ. FT.

- Large windows in the great room really open up your space.
- The galley kitchen offers plenty of space and features a walk-up bar for dining.



ROSS RUN 540 SQ. FT.

- Spend your evenings relaxing in front of the fireplace in the large Great Room, or relax on the spacious front porch, enjoying the view to your own piece of paradise.
- Second bedroom accommodates kids, guests, or could even double as a craft room or home office.



HEARTS CONTENT 448 SQ.

- Massive front porch perfect for quiet evenings and family gatherings.
- Full-sized closet flanks the bedroom providing plenty of storage keeping your life uncluttered.
- Enjoy the full-sized shower in the full bath.



ELKVIEW 576 SQ.FT

- Our "original" Tiny Home features an open floor plan, with a large L-Shaped kitchen.
- Two bedrooms and a full bath provide ample space for your family or guests.
- Optional packages include a garage, front porch, or rear deck.

TINY HOME PACKAGES INCLUDE

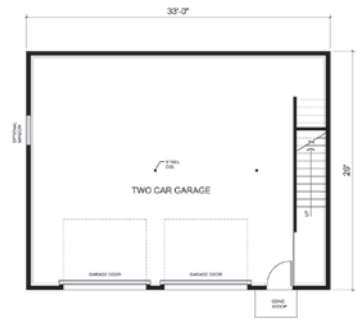
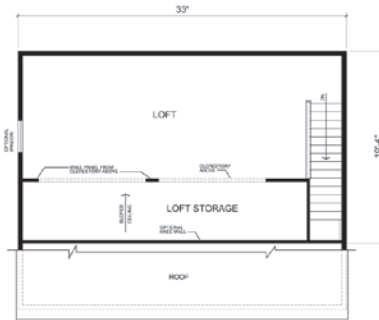
- Lumber
- Doors & windows
- Roofing, siding, trim
- Drywall & cabinets
- Hardware
- Detailed blueprints

Product selection varies by store, so ask your 84 associate for more details.

Artist renderings & photos. Actual packages and options vary.

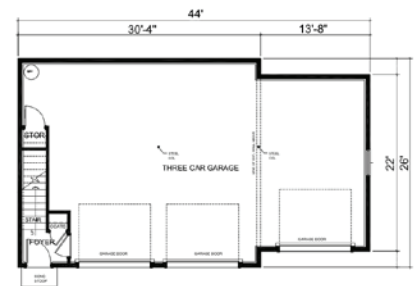
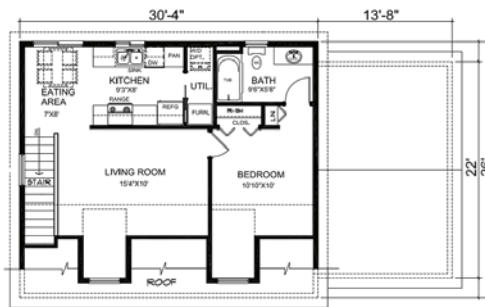
PREMIUM GARAGES

3-CAR CONTEMPORARY GARAGE



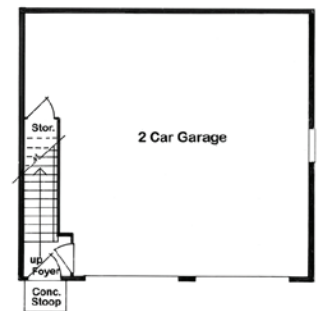
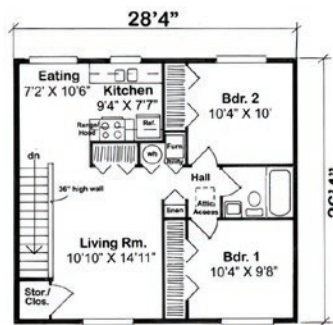
- 33'x 26'
- Elegant clerestory design
- 638 sq.ft. bonus area
- 858 sq.ft. garage area
- 12' loft ceiling height at peak
- 8' garage wall height
- Optional 9' garage wall height
- Rafter roof
- Plan #30011
- (857-81-99)
- (857-86-99)

3-CAR COUNTRY APARTMENT



- 44'x 26'
- 687 sq.ft. living area
- 1,004 sq.ft. garage area
- 1 bedroom
- 1 full bath
- Trussed or rafter roof
- 8' garage area height
- 8' living area height
- Plan #30031
- (857-83-99)

2-CAR, 2 BEDROOM APARTMENT

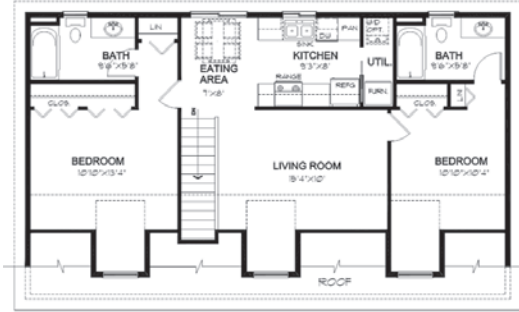


- 28'x26'
- 746 sq.ft. living area
- 1,004 sq.ft. garage area
- 2 bedrooms
- 1 full bath
- Trussed roof
- 8' garage area height
- 8' living area height
- Plan #30040
- (857-67-99)

Artist renderings & photos. Actual packages and options vary. Garage door prices will vary by options selected.

PREMIUM GARAGES

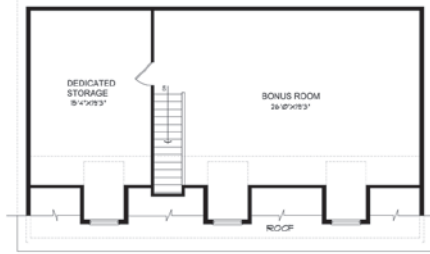
3-CAR APARTMENT GARAGE OR 3-CAR STORAGE GARAGE



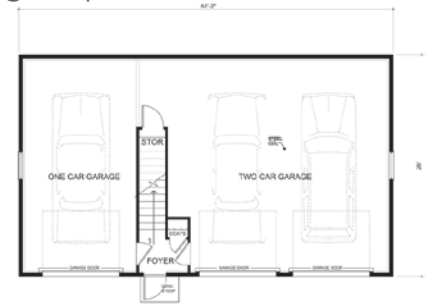
Apartment Garage Top Level

- 44'x 26'
- 887 sq.ft. living area (2 bedrooms and 2 full baths) or bonus area
- 1,068 sq.ft. garage area
- Trussed or rafter roof

- Apartment Garage Plan #30032 (857-84-99)
- Storage Garage Plan #30034 (857-85-99)



Storage Garage Top Level



Bottom Level

DUTCH COLONIAL

plus second floor storage area

2 CAR EAVE ENTRY

with workshop & studio loft



- 22' x 26'
- Rafter roof
- First floor height: 8'
- Loft height: 7'
- Two 9'x7 garage doors

- Entry door
- Grooved siding
- Plan #2284 (833-45-99)



- 32' x 24'
- Rafter roof
- First floor height: 8'
- Loft ceiling height: 7'

- Two 9'x7 garage doors
- Double entry door
- Grooved siding
- Plan #2384 (832-90-99)

SPECIALTY GARAGE PACKAGES INCLUDE

- Treated sill plates
- Framing lumber
- Roofing
- Exterior trim
- Doors & windows per plan
- Stair framing
- Cabinets per plan
- Countertop per plan

Artist renderings & photos. Actual packages and options vary. Garage door prices will vary by options selected.

TRUSSED GARAGES

1 - 1.5 CAR GARAGES

STANDARD GARAGE FEATURES

- 16" o.c. wall framing
- Grooved or vinyl siding
- Engineered roof trusses
- Fiberglass roofing shingles
- Drip edge
- Steel insulated service door
- Window
- Overhead garage door(s)
- Soffit & fascia

STANDARD ELEVATION

- 9'x7' overhead door

16'X20' (810-06-99) (810-07-99)

16'X24' (810-15-99) (810-16-99)

18'X20' (811-10-99) (811-11-99)

18'X24' (811-16-99) (811-17-99)



ELEVATION "A"

- 16'x7' overhead door

20'X20' (811-22-99) (811-23-99)

20'X24' (811-33-99) (811-34-99)

20'X28' (811-44-99) (811-45-99)



ELEVATION "B"

- 9'x7' overhead door

20'X20' (811-27-99) (811-28-99)

20'X24' (811-38-99) (811-39-99)

20'X28' (811-49-99) (811-50-99)

22'X24' (811-55-99) (811-56-99)

22'X28' (811-61-99) (811-62-99)

Artist renderings & photos. Actual packages and options vary. Garage door prices will vary by options selected.

TRUSSED GARAGES

2 - 2.5 CAR GARAGES



STANDARD ELEVATION

- 9'x7' overhead doors

- 24'X24'** (810-28-99) (810-29-99)
- 24'X28'** (810-38-99) (810-39-99)
- 24'X32'** (810-47-99) (810-48-99)
- 26'X28'** (811-67-99) (811-68-99)
- 26'X32'** (811-73-99) (811-74-99)
- 28'X28'** (810-67-99) (810-68-99)



EAVE ENTRY

- 9'x7' overhead doors

- 24'X24'** (810-25-99) (810-26-99)



ELEVATION "A"

- 9'x7' overhead doors

- 30'X32'** (811-79-99) (811-80-99)
- 30'X36'** (811-90-99) (811-91-99)



ELEVATION "B"

- 16'x7' overhead door

- 30'X32'** (811-84-99) (811-85-99)
- 30'X36'** (811-95-99) (811-96-99)

OPTIONAL UPGRADES

- Drywall
- Ventilation
- Shelving
- Gutter & downspouts
- Skylights
- Extra windows & doors
- Insulation
- Cabinets

Artist renderings & photos. Actual packages and options vary. Garage door prices will vary by options selected.

TRUSSED GARAGES

3 CAR

STANDARD ELEVATION

- (3) 9'x7' overhead doors

32'X32' (812-01-99) (812-02-99)

32'X36' (812-12-99) (812-13-99)

32'X40' (812-23-99) (812-24-99)



FREE garage custom design estimating service available. Ask for your free design planner.



ELEVATION "B"

- 9'x7' & 16'x7' overhead doors

32'X32' (812-06-99) (812-07-99)

32'X36' (812-17-99) (812-18-99)

32'X40' (812-28-99) (812-29-99)



EAVE ENTRY

- 9'x7' overhead doors

32'X24' (810-57-99) (810-58-99)

32'X28' (810-76-99) (810-77-99)

OPTIONAL UPGRADES

- Drywall
- Ventilation
- Shelving
- Gutter & downspouts
- Skylights
- Extra windows & doors
- Insulation
- Cabinets

Artist renderings & photos. Actual packages and options vary. Garage door prices will vary by options selected.

POLE BARNS & PAVILIONS

FREE pole building custom design estimating service available. Ask for your **FREE** design planner.



POLE BARN FEATURES

- Pressure treated posts
- 2"x4" or 2"x6" wall girts per plan
- Engineered roof trusses - 48" o.c.
- Painted steel siding & roofing
- Sliding or overhead doors per plan
- Treated skirt boards
- Double truss carriers
- 2"x4" roof purlins
- 36" steel insulated service door
- Eave overhangs

- 24'X24'X8'** 8' sliding door on end (838-89-99)
- 24'X32'X8'** 8' sliding door on end (838-90-99)
- 24'X32'X8'** 16'x7' overhead door on end (838-91-99)
- 24'X32'X10'** 8' sliding door on end (838-92-99)
- 24'X40'X10'** 8' sliding door on end (838-93-99)
- 30'X40'X8'** 10' sliding door on end (838-94-99)
- 30'X40'X10'** 10' sliding door on end (838-95-99)
- 30'X40'X12'** 10' sliding door on end (838-96-99)

- 40'X64'X12'** 15'9" sliding door on end
15' sliding door on side (840-71-99)
- 40'X80'X12'** 15'9" sliding door on end
15' sliding door on side (840-72-99)
- 48'X64'X12'** 15'9" sliding door on end
15' sliding door on side (840-73-99)
- 48'X80'X12'** 15'9" sliding door on end
15' sliding door on side (840-74-99)

CARPORT / PAVILIONS



SHINGLED ROOF WITH GROOVED SIDING

- 6"x6" treated posts
- 2"x6" treated skirt boards
- 2"x6" wall girts - 2' o.c.
- 2"x10" double truss carriers
- 4'x8' grooved siding
- Eave overhangs
- Roof trusses - 2' o.c.
- Ridge vent
- 7/16" OSB roof sheathing
- Plywood clips
- #15 roofing felt
- Fiberglass roofing shingles
- Drip edge
- Soffit & fascia
- Hardware & fasteners

STEEL ROOF WITH STEEL SIDING

- 6"x6" treated posts
- 2"x6" treated skirt boards
- 2"x6" wall girts - 2' o.c.
- 2"x10" double truss carriers
- Eave overhangs
- Roof trusses - 4' o.c.
- 2"x4" roof purlins - 2' o.c.
- Ridge vent
- Painted steel siding & roofing
- Painted steel soffit & fascia
- Drip edge
- Hardware & fasteners

Open wall pavilions also available.

SIZES AVAILABLE
(8', 10', OR 12' HIGH)

12'X12'	16'X12'	20'X12'	24'X12'
12'X20'	16'X16'	20'X16'	24'X16'
12'X16'	16'X20'	20'X20'	24'X20'
12'X24'	16'X24'	20'X24'	24'X24'

Artist renderings & photos. Actual packages and options vary. Garage door prices will vary by options selected.

84[®] LUMBER KITCHEN & BATH DESIGN

Don't take your chances with just any design service. Let our professional kitchen & bath designers create your custom space. Ask for your FREE design planner!

Aristokraft
CABINETRY

CABINETRY BY
Decorá

Merillat
We are America's Cabinetmaker.[®]

Schrock
cabinetry

1951
Cabinetry

W
WOLF HOME PRODUCTS

ARDITO CABINETRY
A SIBERTY PRODUCT OF 84 LUMBER



84LUMBER.COM

YDTL #D-1425 - 021026