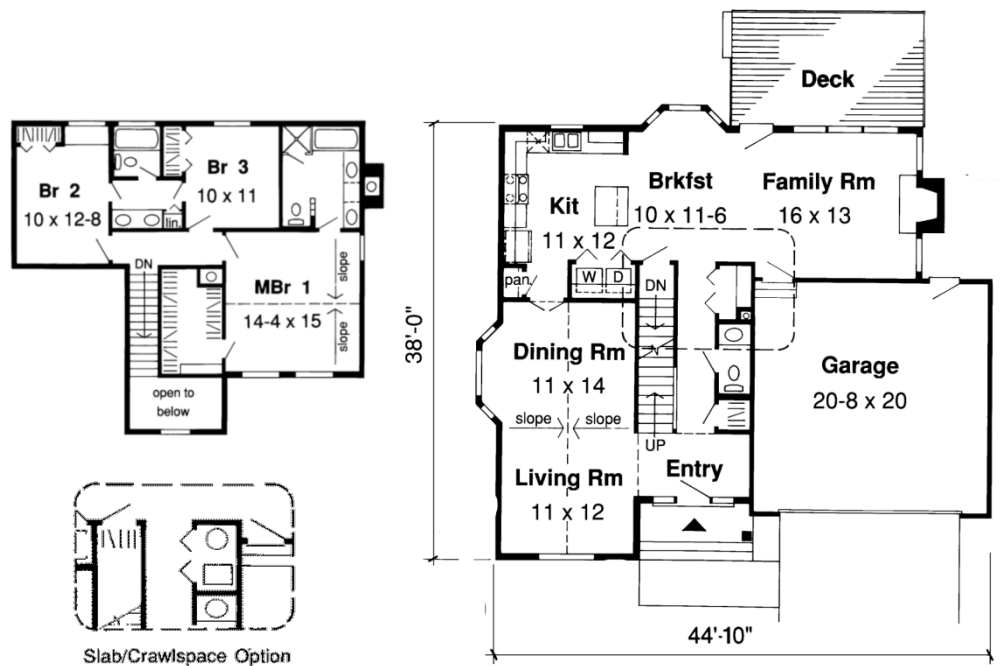


Archmont 1,930 sq.ft.



Specifications

Total Living Area:	1,930 sq.ft.
Main Living Area:	1,056 sq.ft.
Upper Living Area:	874 sq.ft.
Garage area:	430 sq.ft.
House Width:	44'10"
House Depth:	38'0"
Bedrooms:	3
Baths:	2 1/2
Max Ridge Height:	26'0"
Primary Roof Pitch:	6/12
Porch:	42 sq.ft.
Deck:	202 sq.ft.
Formal Dining Room:	Yes
Fireplace:	Yes
Main Ceiling Height:	8'
Upper Ceiling Height:	8'
Foundation:	B, C, S
Walls:	2x6
Plan:	34851



Traditional Gem with light and space.

This classic exterior with plenty of curbside appeal encloses a cozy plan. The living/dining room combination is brightened by abundant windows and the family areas share a backyard view, patio access, a fireplace and an entrance to the kitchen which is equipped with a built-in pantry. This family home features a master suite complete with a room-sized walk-in closet and a private bath, two other bedrooms that share a hall bath and a two-car garage.

Photos or renderings will vary from actual plan.



Oaks Home Collection

Your Oaks home package will include these basic package components:

(Upgrades and substitutions are available on most components)

Exterior Shell Package

- Blueprints
- Treated sill plates
- Floor joists and rim joists
- 3/4" plywood floor
- 2"x6" wall framing
- OSB wall sheathing
- Building wrap
- Roof rafters or trusses per plan
- OSB roof sheathing
- Fiberglass roofing shingles
- Aluminum drip edge
- Roofing felt
- Roof ventilation
- Insulated windows
- Exterior trim
- Fiber cement siding
- Fiber cement soffit & fascia
- Fiber cement trim
- Gutters and downspouts
- Insulated exterior doors
- Exterior locksets
- Nails and hardware

Interior Package

- R-19 wall insulation
- R-30 ceiling insulation
- Insulation baffles
- Drywall,
- Drywall finishing materials
- Colonist primed interior doors
- 2 1/4" fingerjoint Colonial casing
- 3 1/4" fingerjoint Colonial base
- Shelving & closet rods
- Privacy and passage locks
- Fasteners and adhesives

Kitchen and Bath Packages

- Timberlake Tahoe Kitchen cabinets
- Post-formed laminated countertop
- Stainless steel double bowl sink
- Timberlake Tahoe Bathroom vanities
- Cultured marble vanity tops
- Bath cabinets & mirrors
- Tub/shower units



The following materials and services are not supplied by 84 Lumber:

- Foundation
- Steel beams or columns
- Brick
- Stone
- Stucco
- Plumbing
- HVAC
- Electric
- Finish flooring

To order plans call 1-800-359-8484, or see your local 84 Lumber associate.