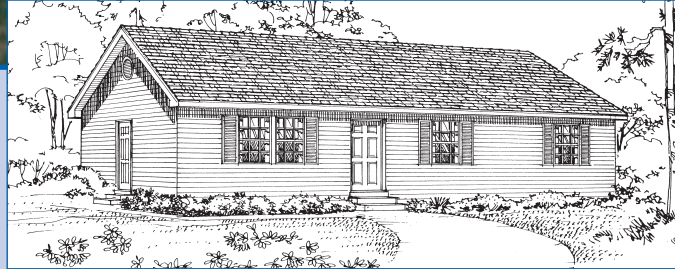


# Bluff City

VALUE PLAN



Photo or artist rendering may vary from actual plan.



**Total living area:  
1,288 sq. ft.**

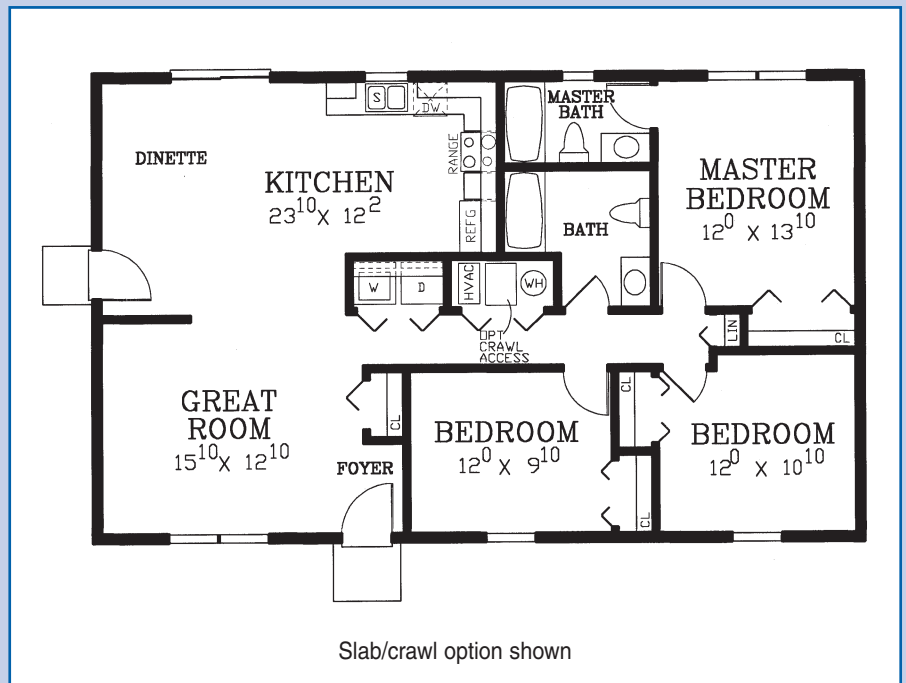
## Charming Ranch

- 3 Bedrooms
- 2 Baths
- Large Kitchen/Dinette Area
- Great Room with dividing half wall
- Large Central Bath

*All the charm of a traditional country home is wrapped up in this efficient, economical ranch. The great room provides a warm welcome to guests, while the open kitchen and dining area offers plenty of space for active family gatherings.*

**Width: 46'**

**Depth: 28'**



Wall Options: • 2" x 4" • 2" x 6"

Foundation Options: • Slab • Crawl Space • Full Basement