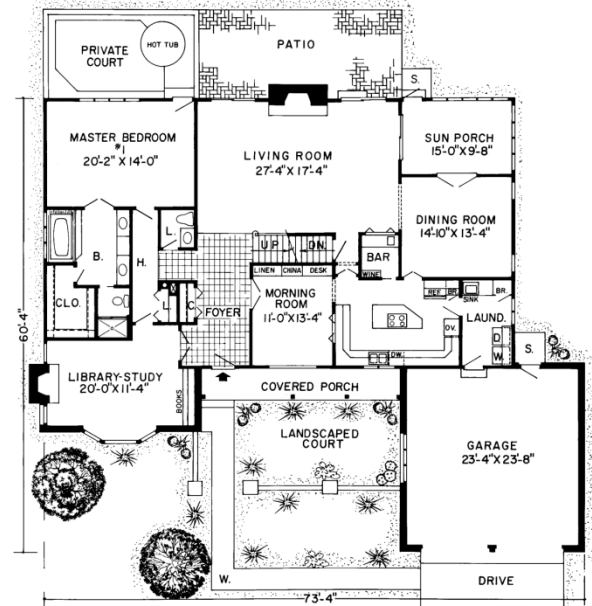
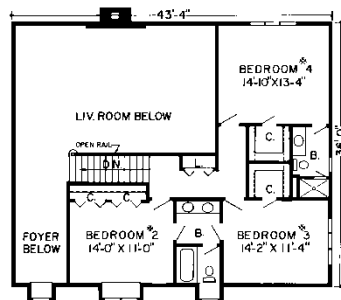


Alexandria 3,440 sq.ft.



Specifications

Total Living Area:	3,440 sq.ft.
Main Living Area:	2,486 sq.ft.
Upper Living Area:	954 sq.ft.
Garage area:	576 sq.ft.
House Width:	75'4"
House Depth:	62'4"
Bedrooms:	4
Baths:	3 1/2
Max Ridge Height:	35'
Primary Roof Pitch:	12/12
Porch:	257 sq.ft.
Formal Dining Room:	Yes
Fireplace:	Yes
Main Ceiling Height:	8'
Upper Ceiling Height:	8'
Vaulted Ceiling:	Yes
Foundation:	B, C, S
Walls:	2x4
Plan:	10534



Everything You Want!

What a design! The centrally located living room curves to a bar, the kitchen, or the sun porch which is shared with the dining room. The kitchen features a cook island and out-of-the-way laundry room. Most spectacular though is the kitchen's morning room with an elegant window to the porch front. The staircase overlooks the open foyer and living room. Bedroom #2, charmed by a dormer front window, shares a full bath with bedroom #3, and bedroom #4 gets a private bath.

Photos or renderings will vary from actual plan.



Oaks Home Collection

Your Oaks home package will include these basic package components:

(Upgrades and substitutions are available on most components)

Exterior Shell Package

- Blueprints
- Treated sill plates
- Floor joists and rim joists
- 3/4" plywood floor
- 2"x6" wall framing
- OSB wall sheathing
- Building wrap
- Roof rafters or trusses per plan
- OSB roof sheathing
- Fiberglass roofing shingles
- Aluminum drip edge
- Roofing felt
- Roof ventilation
- Insulated windows
- Exterior trim
- Fiber cement siding
- Fiber cement soffit & fascia
- Fiber cement trim
- Gutters and downspouts
- Insulated exterior doors
- Exterior locksets
- Nails and hardware

Interior Package

- R-19 wall insulation
- R-30 ceiling insulation
- Insulation baffles
- Drywall,
- Drywall finishing materials
- Colonist primed interior doors
- 2 1/4" fingerjoint Colonial casing
- 3 1/4" fingerjoint Colonial base
- Shelving & closet rods
- Privacy and passage locks
- Fasteners and adhesives

Kitchen and Bath Packages

- Timberlake Tahoe Kitchen cabinets
- Post-formed laminated countertop
- Stainless steel double bowl sink
- Timberlake Tahoe Bathroom vanities
- Cultured marble vanity tops
- Bath cabinets & mirrors
- Tub/shower units



The following materials and services are not supplied by 84 Lumber:

- Foundation
- Steel beams or columns
- Brick
- Stone
- Stucco
- Plumbing
- HVAC
- Electric
- Finish flooring

To order plans call 1-800-359-8484, or see your local 84 Lumber associate.