

FOREST GLEN

Plan #74001

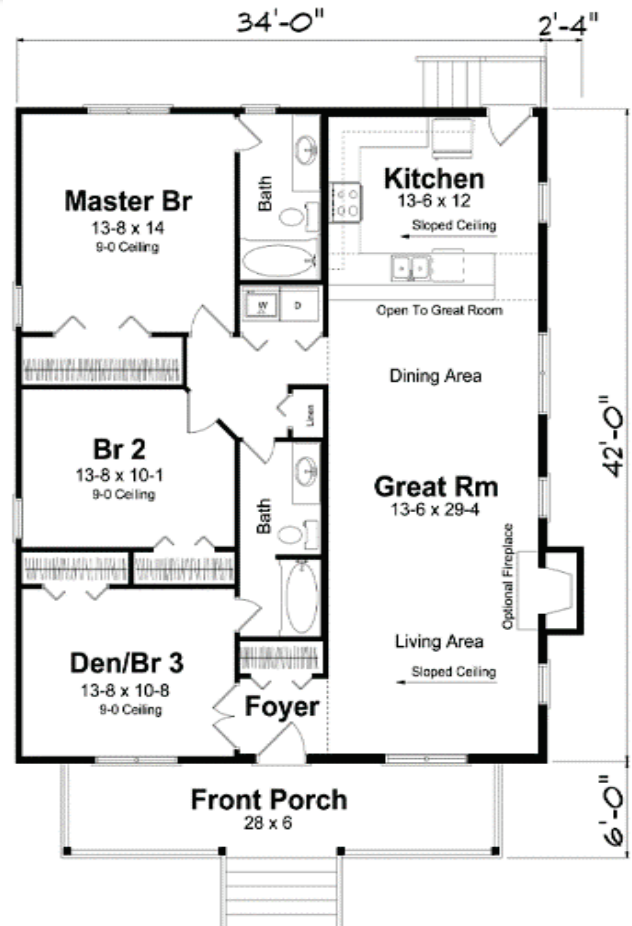
1,428 SQ.FT.

SPECIFICATIONS

- Main living area: 1,428 sq. ft.
- Upper bonus area: 585 sq. ft.
- Garage area: 484 sq. ft.
- House width: 34'
- House depth: 48'
- House depth w/garage: 78'
- Stories: 1-1/2
- Bedrooms: 3
- Baths: 2
- Ridge height: 25'
- Roof pitch: 10/12
- Roof Framing: Rafters
- Porch area: 170 sq. ft.
- Main ceiling height: 9'
- Upper ceiling height: 8'
- Foundation: B, C, S
- Exterior walls: 2x6
- Fireplace: Optional
- First floor Master: Yes
- Formal dining room: No



This charming traditional bungalow will welcome you home every day with its spacious front porch. The expansive great room & dining area are easily accessible for serving from the large U-Shaped kitchen, or choose the optional kitchen with a cooking island and pantry area. You'll never feel cramped with the first floor master suite, and there's plenty of space for family and guests with the two more bedrooms and a bonus room upstairs. This plan gives you lots of options to build it with just the right features to fit your lifestyle and budget.

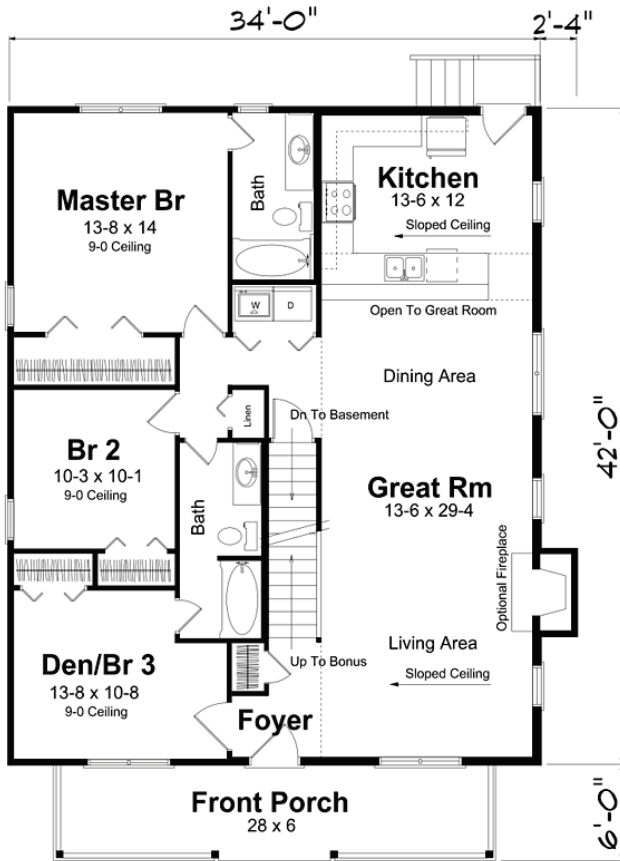


Dimensions shown are approximate. Specifications subject to change without notice.

FOREST GLEN

Plan #74001

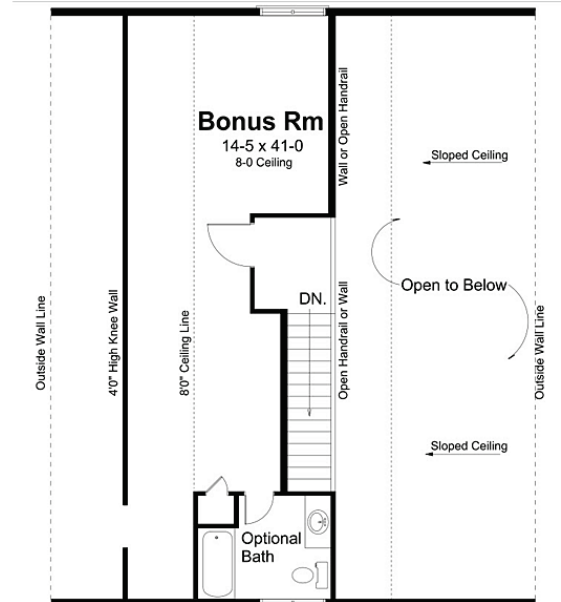
1,428 SQ.FT.



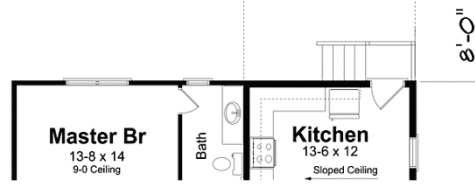
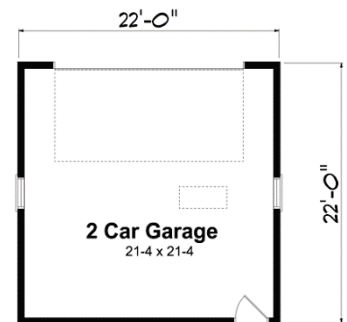
Basement/Bonus room option



Alternate kitchen



Bonus room



2 Car garage option

Dimensions shown are approximate. Specifications subject to change without notice.

*Your home package will include these basic package components:
(Upgrades and substitutions are available on most components)*

Exterior Shell Package

- Blueprints
- Treated sill plates
- Floor joists and rim joists (crawl version)
- Wall framing
- OSB wall sheathing
- Building wrap
- Rafter system or trusses, per plan
- Plywood or OSB roof sheathing
- Fiberglass roofing shingles
- Aluminum drip edge
- Roofing felt
- Roof ventilation
- Insulated windows
- Fiber-cement lap siding & trim
- Soffit & fascia
- Insulated exterior door
- Exterior lockset
- Nails and hardware

Interior Package

- R-19 wall insulation
- R-30 ceiling insulation
- Insulation baffles
- Drywall,
- Drywall finishing materials
- Colonist primed interior doors
- 2 ¼" fingerjoint Colonial casing
- 3 ¼" fingerjoint Colonial base
- Shelving & closet rods
- Privacy and passage locks
- Fasteners and adhesives

Kitchen and Bath Packages

- Timberlake Tahoe Kitchen cabinets
- Post-formed laminated countertop
- Stainless steel double bowl sink
- Timberlake Tahoe Bathroom vanities
- Cultured marble vanity tops
- Bath cabinets & mirrors



The following materials and services are not supplied by 84 Lumber:

- Foundation
- Steel beams or columns
- Brick
- Stone
- Stucco
- Plumbing
- HVAC
- Electric
- Finish flooring
- Shower
- Mirrors
- Appliances
- Furniture

Dimensions shown are approximate. Specifications subject to change without notice.